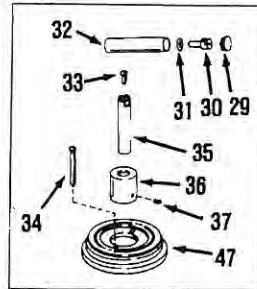
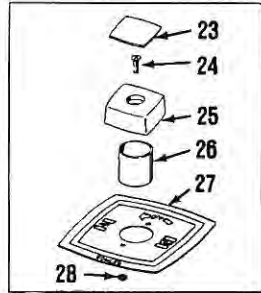


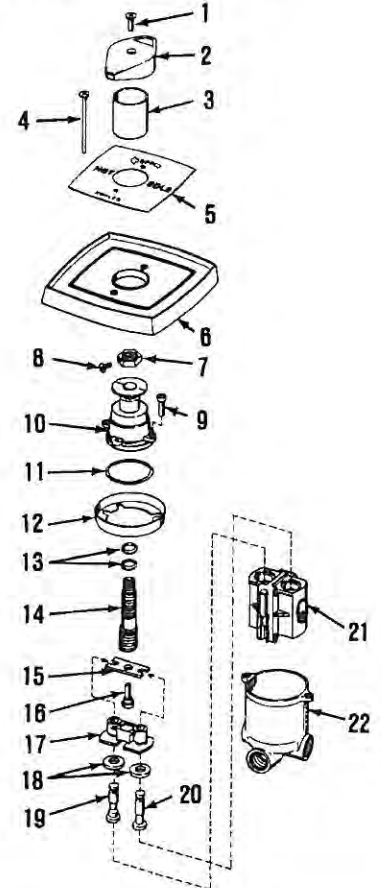
ORDER BY KIT NUMBER OR PART NUMBER, NOT ITEM NUMBER OR KIT LETTER.

Model Numbers K-6900 (Alterna),  
K-6908 (Triton II), K-8225 (Taboret)

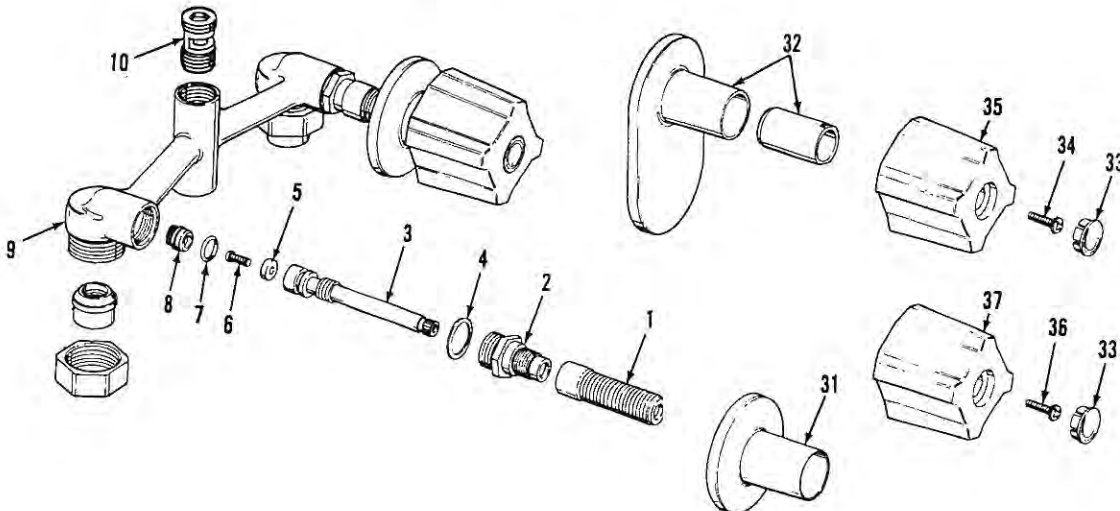
Ordering Options	
Item	Part No. or Kit
1	30201
2	C1805
3	42052
5	C1806
6	C1804
7, 8, 9	30202
10	C1654
11	C1654
12	NOT AVAILABLE
13	C1807
14, 15, 16	C1807
17	C1797
21	C1829
22	*
23	30634
24, 28	30201
25	29697
26	42052
27	42054
28	30201
29 thru 32	30750
33, 34	30752
35	30751
36	30753
37	34453
7 thru 20 Rebuild Kit	76001
47	30754



**KOHLER**®



Model Numbers K-11608, K-11614 (Trend)

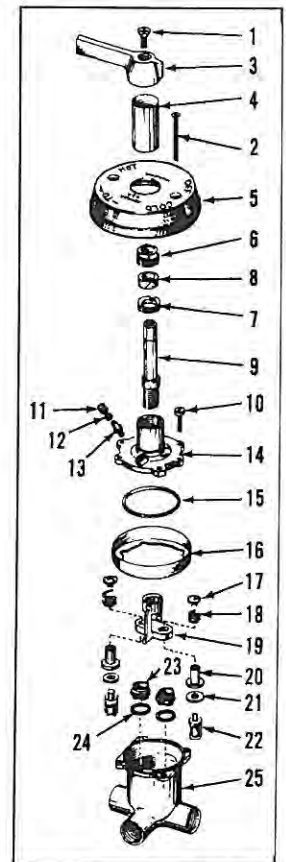
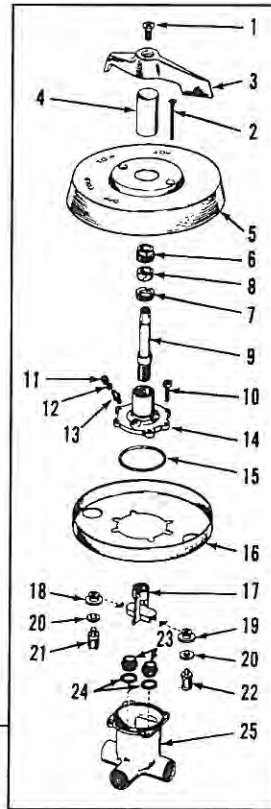


Ordering Options	
Item	Part No. or Kit
<b>VALVE ASSEMBLY</b>	
1,	30119
8	N/A
9	N/A
10	30521
<b>ESCUTCHEONS AND HANDLES</b>	
31	C1581
32	20851
33	C1642
34	21102
35	20386 CLR
36	C1689
37	C1582 Chrome

## Model Number K-6981 (Niedecken)

# KOHLER®

Ordering Options	
Item	Part No. or Kit
1, 2	A, B
3	23063‡, B
4	22910‡, B
5	23061‡, B
6, 7	C
8	D
9	22909
10	E
11, 12, 13	F
14	21971†
15	D
16	*
17, 18, 19	G, G
20	D, G
21, 22	G, G
23, 24	D
25	*



### Kit Ordering Information

Kit	Kit Part No.	Kit Name	Kit Contents
A	30103‡	Screw	1 ea., item 1; 2 ea., item 2
B	23064‡	Handle and Dial Plate	1 ea., items 1, 3, 4, and 5; 2 ea., item 2
C	C1670 30206	Nut and Bushing	1 ea., items 6 and 7
D	C1655 30090†	Valve Rebuilding	1 ea., items 8 and 15; 2 ea., items 20, 23, and 24
E	C1593 21980†	Screw	4 ea., item 10
F	30207†	Screw and Nut	1 ea., items 11, 12, and 13
G	C1656 30092†	Yoke and Plunger	1 ea., items 17, 18, 19, 21, and 22; 2 ea., item 20

\* Not available as a service part.  
 † 22117 Spindle Bushing wrench required for service.  
 ‡ Specify finish.

Ordering Options	
Item	Part No. or Kit
1, 2	A
3	22920‡
4	G or H
5	*
6, 7	B
8	C
9	I or J
10	D
11, 12, 13	E
14	21971
15	C
16	*
17 thru 20	F
21	C, F
22	F, F
23	C, F
24	C
25	*

## Model Number K-7300 (Niedecken)

### Kit Ordering Information

Kit	Kit Part No.	Kit Name	Kit Contents
A	30103‡	Screw	1 ea., item 1; 2 ea., item 2
B	C1670 30206†	Nut and Bushing	1 ea., items 6 and 7
C	C1655 30090†	Valve Rebuilding	1 ea., items 8 and 15; 2 ea., items 21, 23, and 24
D	C1595 21980†	Screw	4 ea., item 10
E	30207†	Screw and Nut	1 ea., items 11, 12, and 13
F	C1656 30092† **	Yoke and Plunger	1 ea., items 19; 2 ea., items 17, 18, 20, 21, 22, and 23
G	22142‡	Sleeve (2")	1 ea., item 4
H	22910‡	Sleeve (1 1/2")	1 ea., item 4
I	22124†	Stem (3 5/8")	1 ea., item 9
J	C1613 22909†	Stem (2 1/2")	1 ea., item 9

\* Not available as a service part.  
 \*\* Replacement differs from original.  
 † #22117 Spindle Bushing wrench required for service.  
 ‡ Specify finish.

210

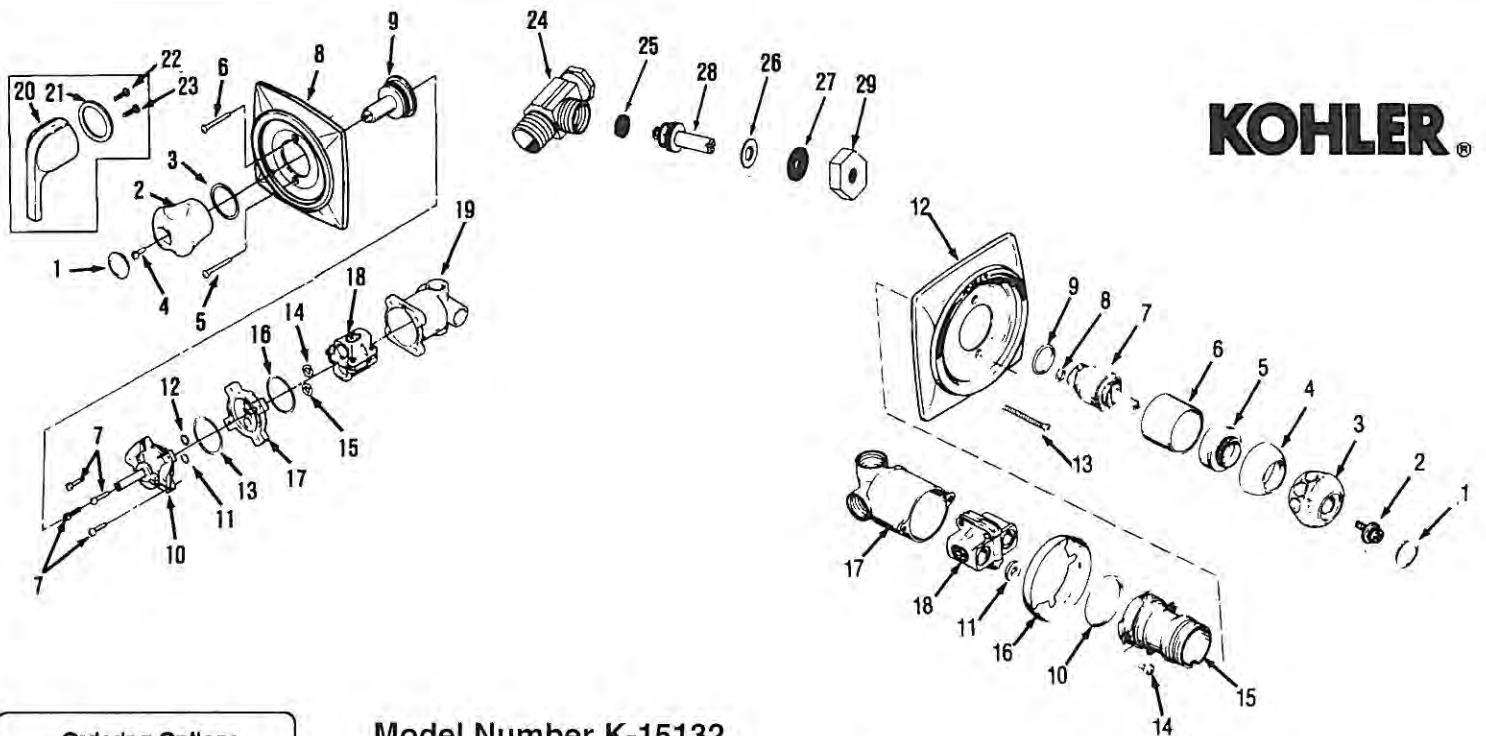
ORDER BY KIT NUMBER OR PART NUMBER, NOT ITEM NUMBER OR KIT LETTER.

Item	Part No. or Kit
1	71841
2, 3	A
4	A, B
5, 6, 7	B
8	30321†
9	30317
10	C
11, 12, 13	C, D
14, 15, 16	D
16, 17	E
18	C1829
19	*
20 thru 23	F
24	G, H
25, 26	G, H, I
27, 28, 29	G, H, I, J

### Model Number K-15102 (Coralais) Pressure Balanced Valve

Kit	Kit Part No.	Kit Name	Kit Contents
A	30316	Handle Kit	1 ea., items 1 thru 4
B	30315	Screw Kit	1 ea., items 4 thru 6, 22 and 23; 4 ea., item 7
C	30318	Valve Kit	1 ea., items 10 thru 13
D	71541	Valve Service Kit	1 ea., items 11 thru 16
E	30320	Adapter Kit	1 ea., items 16 and 17
F	71904	Lever Handle Kit	1 ea., items 20 thru 23
G	71902	Stop (5/8" O.D. Copper)	1 ea., items 24 thru 29
H	71903	Stop (1/2" I.P. Connection)	1 ea., items 24 thru 29
I	30494	Valve Service Kit	2 ea., items 25 thru 29
J	30495	Stop Valve Stem Kit	2 ea., items 27, 28, and 29

\* Not available as a service part.  
† Specify finish.



Item	Part No. or Kit
1	71841, A
2, 3	A
4	B or C
5	71509†
6	71816†
7	D
8, 9	D, E
10, 11	E
12	71839†
13, 14	F
15	71812
16, 17	*
18	C1829

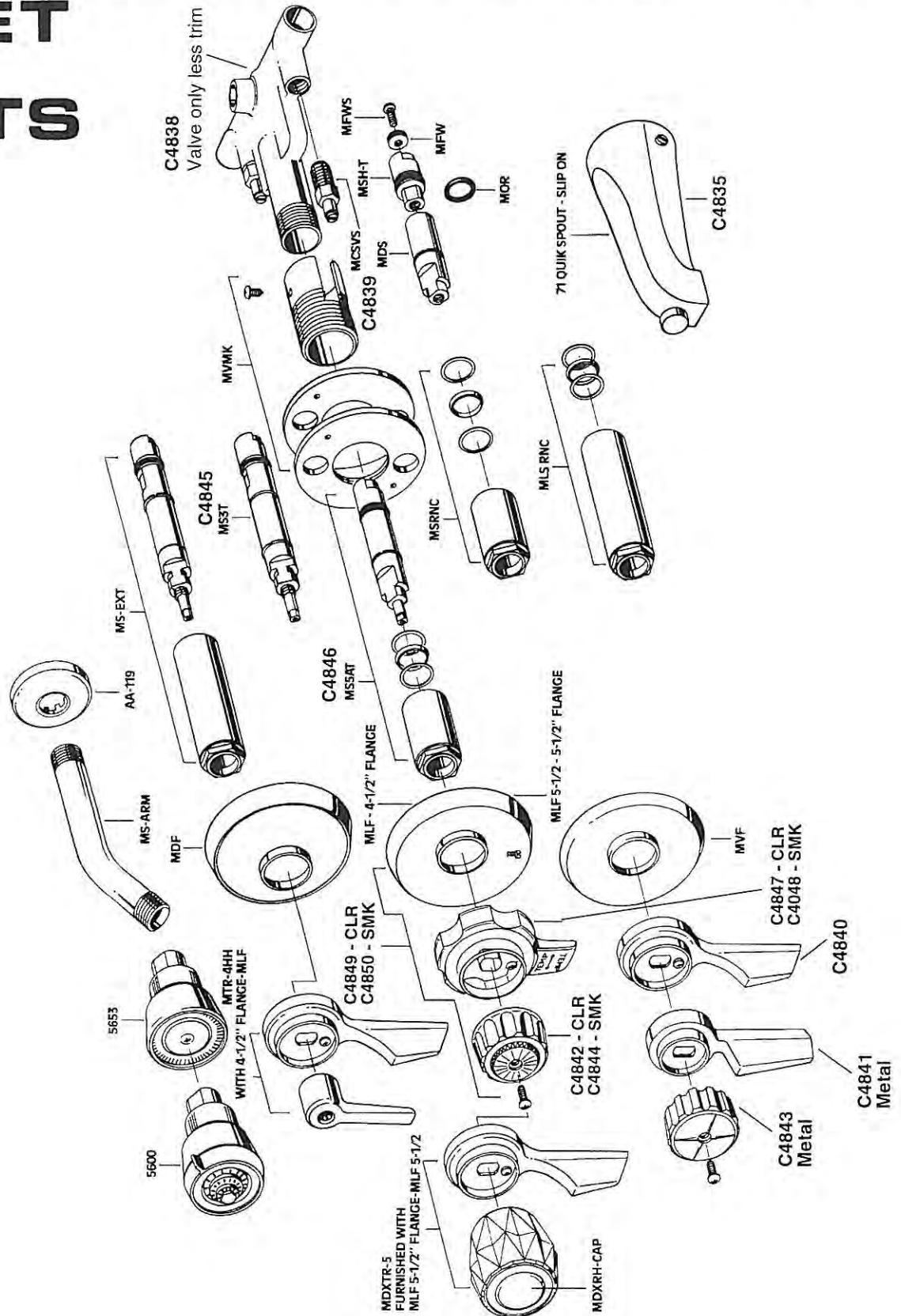
### Model Number K-15132 (Coralais) Pressure Balanced Valve

Kit	Kit Part No.	Kit Name	Kit Contents
A	71840	Handle Kit	1 ea., items 1, 2, and 3
B	71524	Cap (Chrome)	1 ea., item 4
C	71528	Cap (Polished Brass)	1 ea., item 4
D	C1676 30413	Valve Cartridge	1 ea., items 7 and 9; 2 ea., item 8
E	71541	Valve Repair Kit	2 ea., items 8 and 11; 1 ea., items 9 and 10
F	30426†	Screw Kit	2 ea., items 13 and 14

\* Not available as a service part.  
† Specify finish.

934 S.E. Sixth Avenue • Portland, Oregon 97214 • (503) 235-2167 • (800) 929-5039 • Fax (503) 239-3774

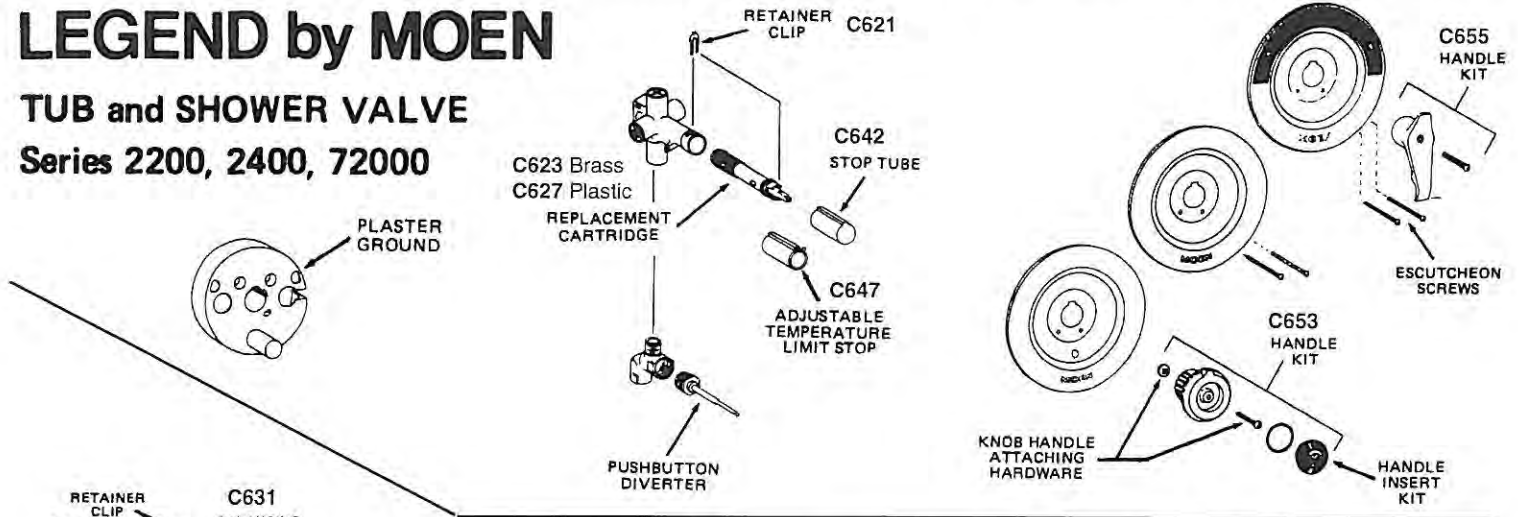
**MIXET  
 PARTS**





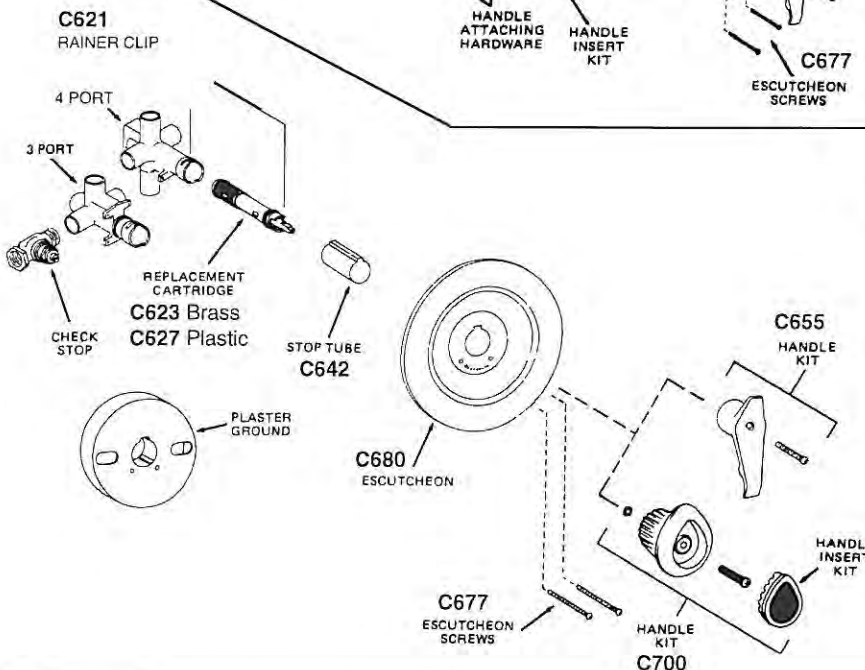
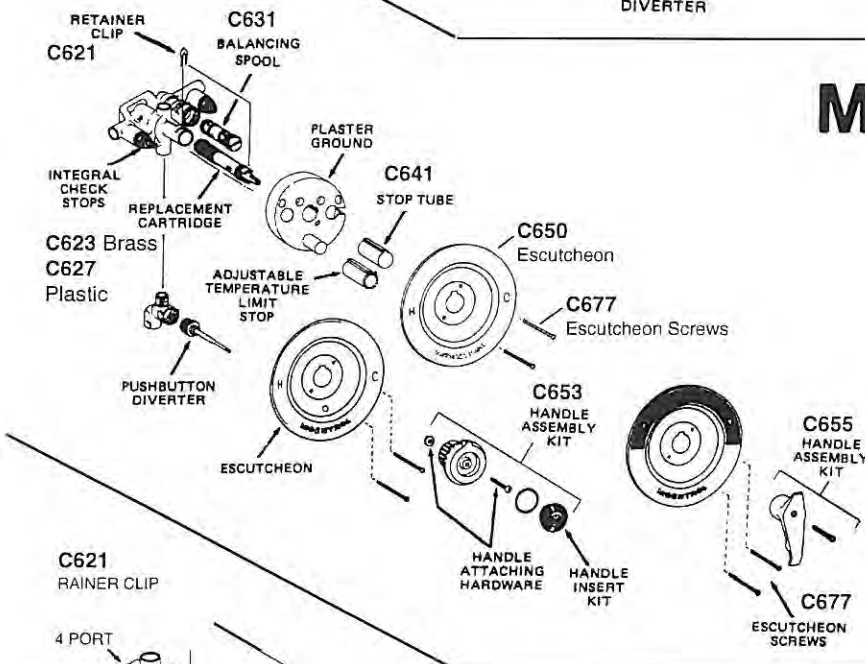
# LEGEND by MOEN

## TUB and SHOWER VALVE Series 2200, 2400, 72000



# MOENTROL® by MOEN

## TUB and SHOWER VALVE Series 3100, 3200, 73100



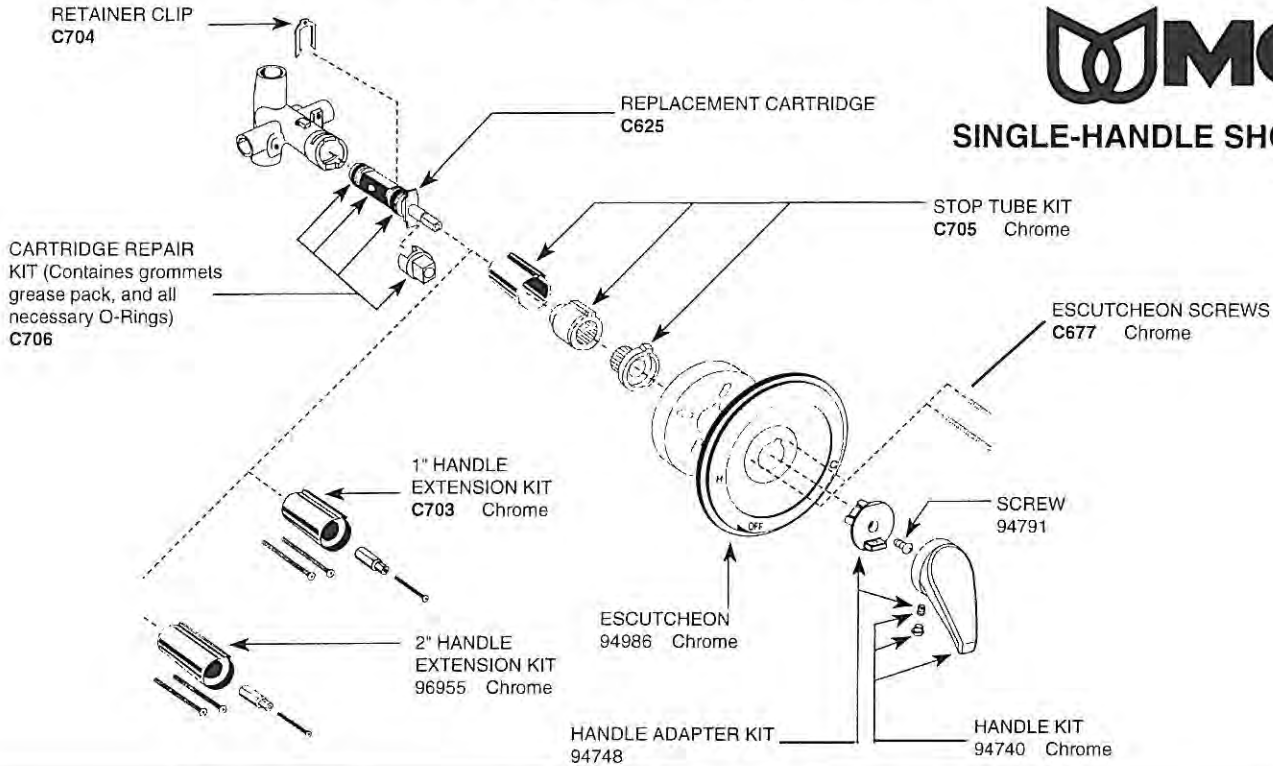
# CHATEAU by MOEN

## TUB and SHOWER VALVE SERIES 2600A, 2700A, 72700

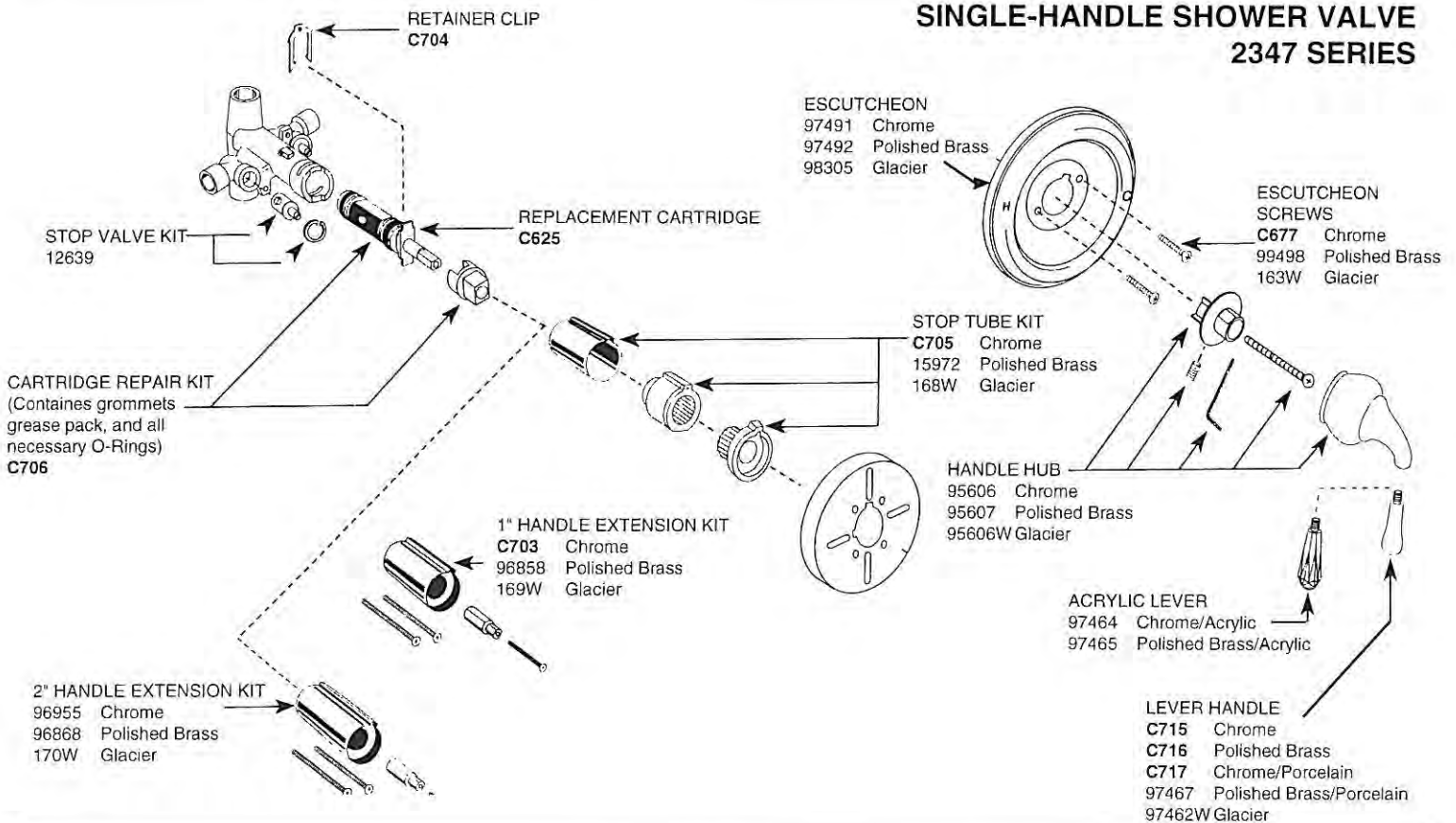
934 S.E. Sixth Avenue • Portland, Oregon 97214 • (503) 235-2167 • (800) 929-5039 • Fax (503) 239-3774



## SINGLE-HANDLE SHOWER VALVE 2353 SERIES

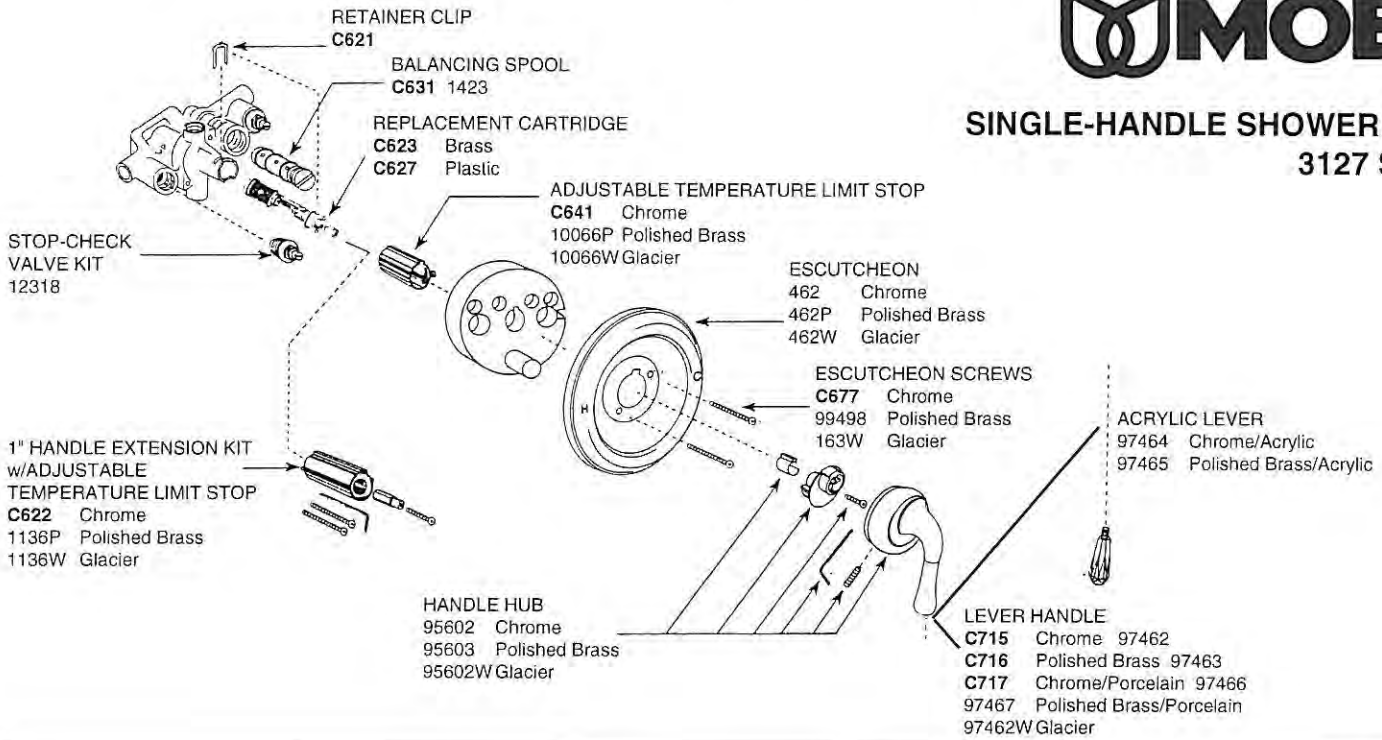


## SINGLE-HANDLE SHOWER VALVE 2347 SERIES

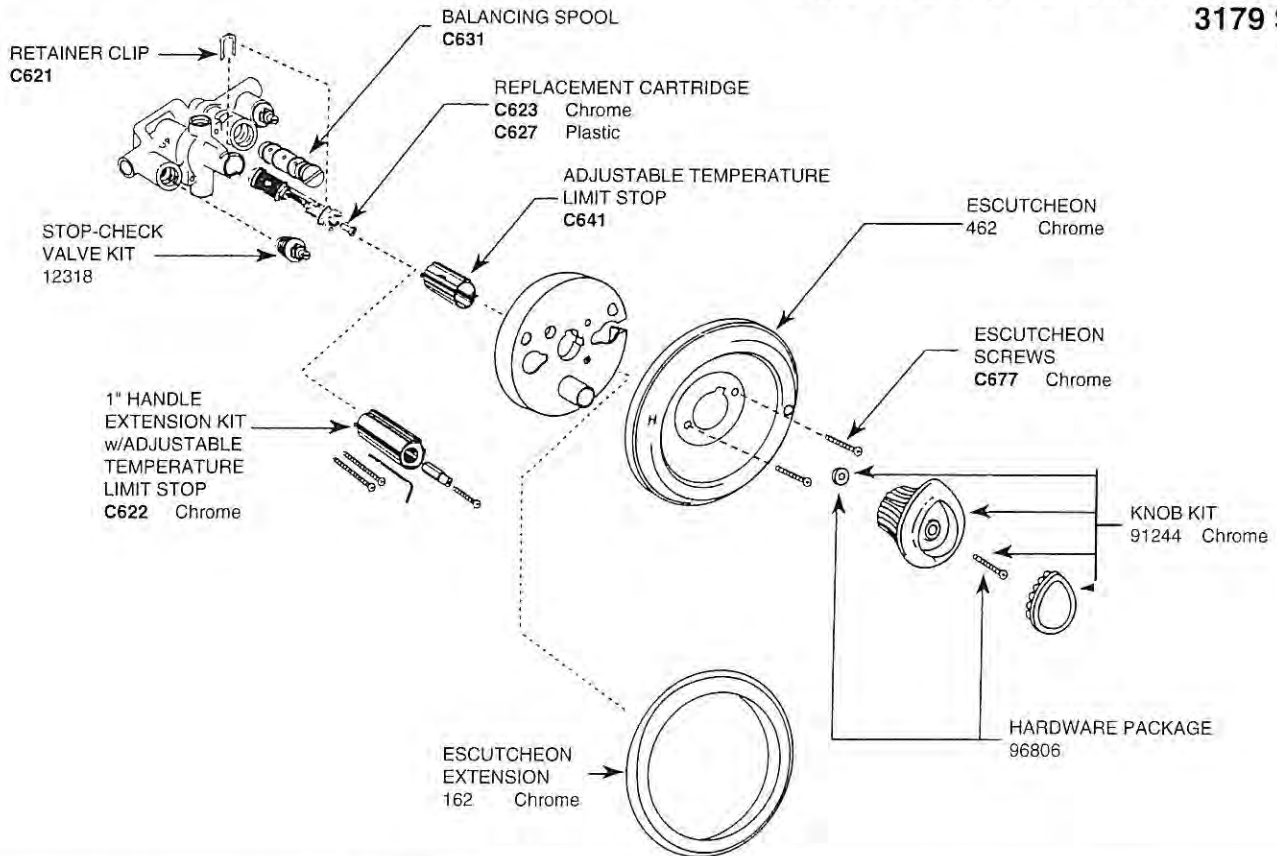




**SINGLE-HANDLE SHOWER VALVE  
3127 SERIES**



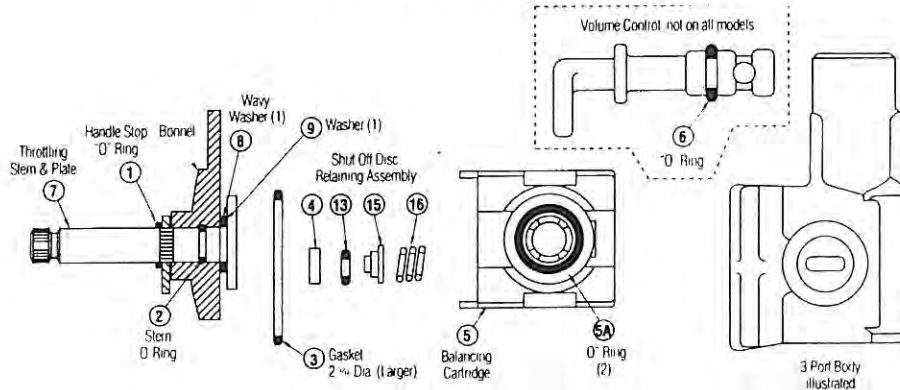
**SINGLE-HANDLE TUB/SHOWER VALVE  
3179 SERIES**



215



## HYDROGUARD 400 / 410 . . . Models 1-3, 7



### TROUBLESHOOTING

1. Water leak at stem and/or bonnet.
2. Flow continues after mixer is turned off.

Gasket and Disc Replacement

### REPAIR KIT NO.

410-182  
C5173

### WHERE USED

400 / 410  
All Models

### REPAIR KIT INCLUDES

1-4, 5A, 6  
\*\* (See note below)

1. Variable or untempered discharge temp.
2. Leakage after mixed is turned off.

Balance Chamber

410-183  
C5174

400: Models 1-3  
410: Models 1-3, 7  
Metal and Plastic Bonnet

3-5, 5A, 13, 15, 16  
\*\* (See note below)

1. Flow continues after mixer is turned off.
2. Handle splines on stem damaged.

Stem and Plate Replacement

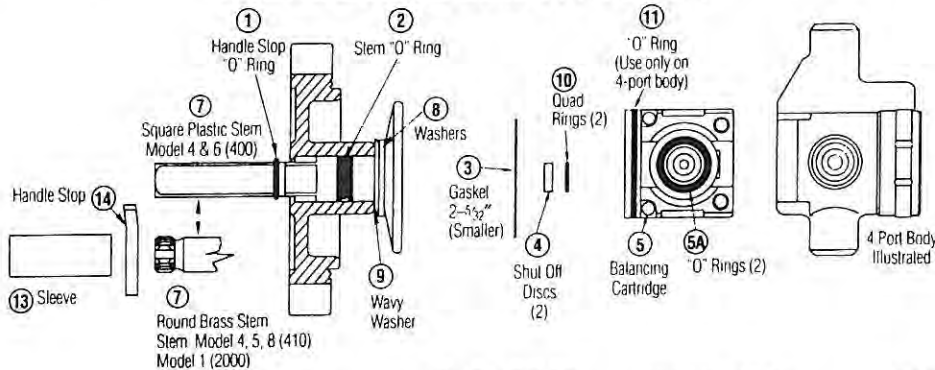
410-378  
C5180

400: Models 1-3  
410: All Models

1-4, 7-9  
Item 7 has brass stem and Celcon Plastic Stem

NOTE: \*\* Use O-Ring only on Hydroguard 412 / 414. Others use gasket.

## HYDROGUARD 400 . . Models 4 & 6 • HYDROGUARD 410 . . . Models 4, 5, 8 HYDROGUARD 2000 . . . Model 1



### TROUBLESHOOTING

1. Water leak at stem and/or bonnet.
2. Flow continues after mixer is turned off.

Gasket and Disc Replacement

### REPAIR KIT NO.

410-182  
C5173

### WHERE USED

400, 410, and 2000  
All Models

### REPAIR KIT INCLUDES

1-4, 5A, 10, 11  
Use item 11 only in Models 4-6, 4-port body (see note 1 below)

1. Variable or untempered discharge temperature. Balance Chamber
2. Leakage after mixed is turned off.

401-175  
C5168

400: Models 4-6  
410: Models 4, 5  
2000: Model 1  
410: Models 8

3-5, 5A, 10, 11  
Use item 11 only in Models 4-6, 4-port body (see note 1 below)  
3-5, 5A, 13, 15, 16

1. Flow continues after mixer is turned off.
2. Handle splines on stem damaged.

Stem and Plate Replacement

401-176  
C5169

400: Models 4-6

1-4, 7-9  
Item 7 has square plastic stem and plate (see note 2 below)

NOTE 1: O-Ring, item 11, is used only in 4-port mixers.  
NOTE 2: "C" on stem must face cold water inlet. For Model 4-400, you must also order new handle for new brass stem.  
Order either lucite handle kit #410-383 or lever handle kit #410-384.

410-378  
C5180

410: All Models  
2000: All Models

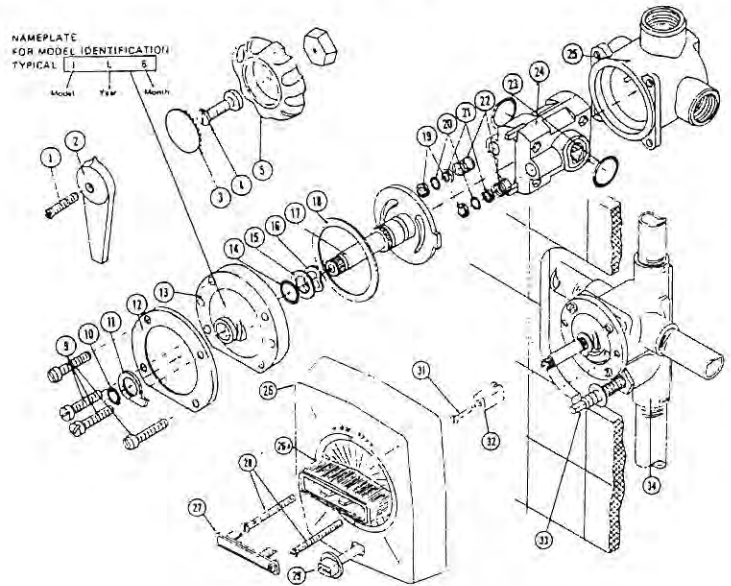
1-4, 7-9  
Item 7 has round brass stem and plastic plate.



934 S.E. Sixth Avenue • Portland, Oregon 97214 • (503) 235-2167 • (800) 929-5039 • Fax (503) 239-3774

C5191	1	420-218	Handle Screw (8-32x7/8")	C.P. Steel
	2	420-231	Lever Handle	C.P. Cast
	3	420-255	Plug Button	C.P. Steel
	4	420-215	Handle Screw (8-32x1/2")	C.P. Steel
C5166	5	400-078	Handle (includes items 3, 4, 5)	-
	9	030-889	Bonnet Screws (10-24x7/8")	St. Steel
C5178	10	410-366	O-Ring (3/8 x 1/2 x 1/16")	Buna N
	11	410-371	Temperature Stop	Brass
C5177	12	410-377	Support Ring	St. Steel
	13	410-346	Bonnet	Noryl
C5174	14	410-366	O-Ring (3/8 x 1/2 x 1/16")	Buna N
	15	410-368	Washer	Synthane
	16	410-369	Wavy Washer	St. Steel
	17	*	Adjustment Stem	-
	18	*	Bonnet Gasket	Rubber
	19	*	Shut Off Disc	Buna N
	20	410-366	O-Rings	Buna N
	21	*	Guide	Brass
	22	*	Spring	Monel
	23	*	O-Ring (3/4 x 15/16 x 3/32")	Buna N
C5190	24	*	Cartridge (Includes 18, 19, 21-23, 23)	Celcon
	25	OBS	Body	Bronze
	26	400-062	Dial Plate (Includes 27, 28, 31, 32)	-
	26A	401-086	Handle Only	Duralac
C5190	27	401-090	Plug Button	-
	28	420-216	Screw (8-32 x 2")	Steel
	29	401-120	Diverter Knob Assembly	-
	30	OBS	Dial Plate w/Diverter Assembly	-
	31	032-064	Screw (8-32 x 1/2")	Brass
	32	401-088	Stem Guide	C.P. Cast
	33	401-235	Diverter Kit (includes 30)	-
	34	OBS	Body (Diverter)	Bronze

### HYDROGUARD 400 MODELS 1-3



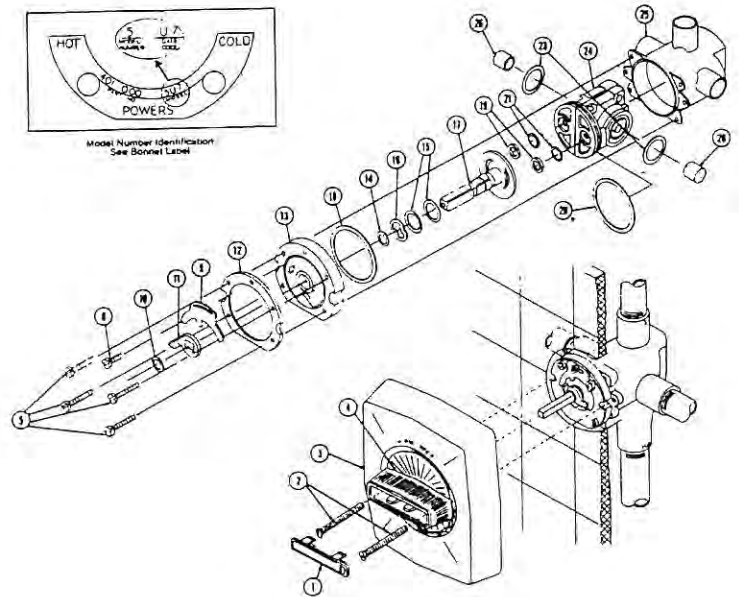
NOTE: Model 1 dial is not available.

\*Available in kits. See Page H-32



### HYDROGUARD 400 MODELS 4-6

C5171	1	401-090	Plug Button	-
	2	032-271K	Screws	Brass
	3	401-230A	Complete Dial Assembly	-
	4	401-231	Handle	-
C5167	5	030-885	Bonnet Screws (10-32 x 1")	St. Steel
	6	030-884	Adj. Stop Screw (10-32 x 15/16")	St. Steel
	9	401-228	Adjustment Stop	Stl. Zinc Pl.
	10	410-366	O-Rings 3/8 x 1/2 x 1/16"	Buna N
	11	401-165	Max. Temp. Stop	Brass
	12	410-377	Support Ring	St. Steel
	13	401-162	Bonnet	Noryl
	14	410-366	O-Rings 3/8 x 1/2 x 1/16"	Buna N
	15	410-368	Flat Washer	Synthane
	16	410-369	Wavy Washer	St. Steel
	17	*	Throttling Stem	Celcon
	18	*	Bonnet Gasket	Rubber
	19	*	Shut-Off Discs	Buna N
	20	*	O-Ring 1-3/4 x 1-7/8 x 1/16"	Buna N
	21	*	Quad Rings	Buna N
	23	*	O-Ring 3/4 x 15/16 x 3/32"	Buna N
24	*	Balance Chamber	Celcon	
25	401-158	Body (4 port)	Bronze	
25	401-160	Body (3 port)	Bronze	
26	401-210	Strainer Caps	Celcon	

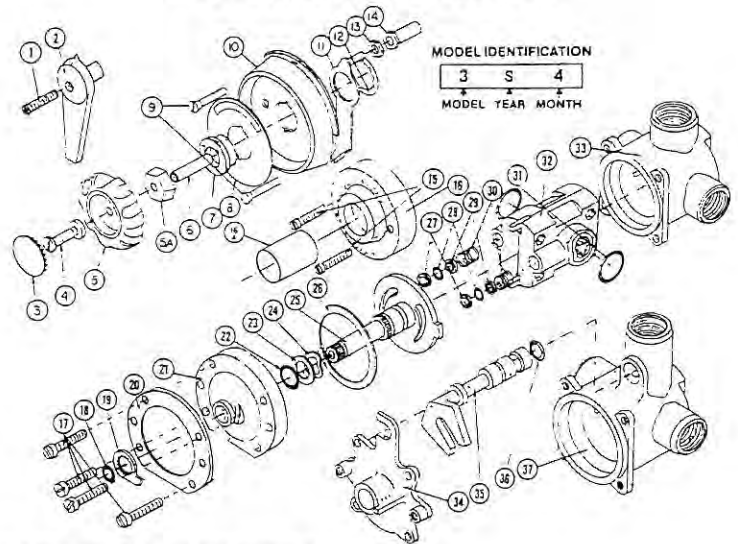


\*Available in kits. See Page H-32

934 S.E. Sixth Avenue • Portland, Oregon 97214 • (503) 235-2167 • (800) 929-5039 • Fax (503) 239-3774

	1	410-365 (10)	Screw (all but 415, 8-32 x 1-1/4")
	1	420-218 (10)	Screw (on 415, 8-32 x 7/8")
<b>C5196</b>	2		Lever Handle
	2	420-230	Lever Handle (419 only)
	3	420-225 (4)	Plug Button Kit
	4	420-215 (4)	Screw (8-32 x 1/2")
	5	227-354**	Lucite Handle
	5A	420-125	Handle Insert
	6	401-267	Sleeve
<b>C5176</b>	7	410-339	Retainer
	8	410-374	Dial Insert (rainbow)
	9	420-216 (20)	Screws
	10	410-160	Dial Plate (standard)
	10	410-161	Dial Plate (deluxe) <i>not shown</i>
	11	410-163	Volume Lever (deluxe only)
	12	410-166	Retainer (deluxe only)
	13	041-080	Nut (deluxe only)
	14	410-167	Sleeve (deluxe only)
	15	030-065G	Exposed Dial Screw (8-32 x 7/16")
	16	440-041	Exposed Dial
16A	227-196		Exposed Dial Sleeve for Lucite Handle
16A	227-196S		Exposed Dial Sleeve for Lever Handle
	17	030-889	Screw (standard 10-24 x 7/8")
	17	030-887	Screw (deluxe 10-24 x 9/16")
	18	410-366 (25)*	O-Ring (3/8 x 1/2 x 1/16")
	19	410-371 (6)	Adjustable Limit Stop
	20	410-377	Support Ring (standard)
	21	410-346	Bonnet (standard)
	22	410-366 (25)*	O-Ring (3/8 x 1/2 x 1/16")
	23	410-368 (15)*	Washer
	24	410-369 (10)*	Wavy Washer
	25	*	Stem (on all except 415/419)
	25	401-083	Stem (for 415)
	26	410-370 (10)*	Bonnet Gasket
	27	*	Shut Off Disc
	28	410-366 (25)	O-Ring (3/8 x 1/2 x 1/16")
	29	*	Guide
	30	*	Spring
	31	*	O-Ring (3/4 x 15/16 x 3/32")
	32	*	Cartridge
	33	410-211	415 Body
	33	410-243	411 and 413 Body
	33	410-244	416 and 417 Body
	34	410-154	Bonnet (deluxe only)
	35	410-372 (2)	Volume Valve Assy. (deluxe)
	36	410-366 (25)	O-Ring (3/8 x 1/2 x 1/16")
	37	410-150	412 and 414 Body

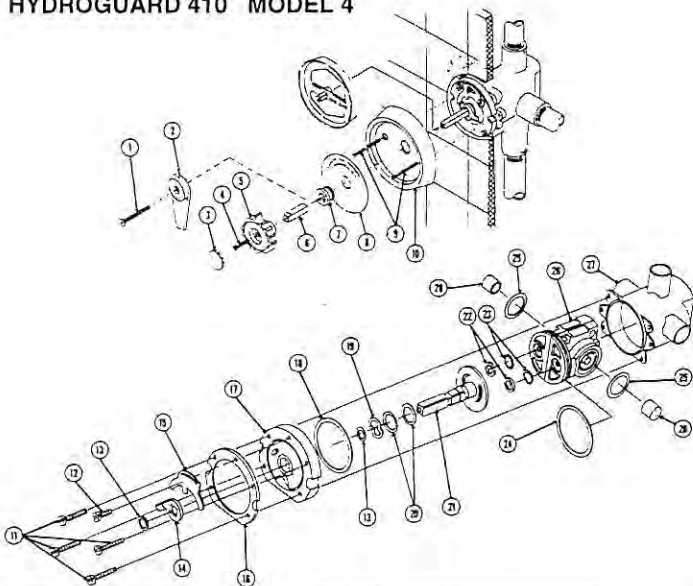
### HYDROGUARD 410 MODELS 1-3



( ) Number of items per package.  
 \* Items available in kits on page H-32  
 \*\* Lucite Handle Kit **C5166** #400-078, contains items 3, 4, 5, 5A, 6 & 9



### HYDROGUARD 410 MODEL 4



	1	034-222G	Screw (8-32 x 1-3/4")	C.P. Brass
	2	-	See Note Below	-
	3	420-225 (4)	Plug Button	C.P. Steel
	4	030-070	Screw (8-32 x 7/8")	Brass
	5	410-359	Handle	Lucite
	6	410-360	Extension	C.P. Brass
	7	401-225	Retainer	Rubber
	8	410-374	Dial Insert	Aluminum
	9	420-216 (20)	Screws (8-32 x 2")	C.P. Steel
	10	410-160	Dial Palte	C.P. Zinc
	11	030-885	Bonnet Screws (4)	St. Steel
	12	030-884	Adj. Stop Screw 10-32 x 15/16"	St. Steel
	13	410-366 (25)	O-Rings (3/8 x 1/2 x 1/16")	Buna N
	14	401-165	Adjustable Limit Stop	Brass
	15	401-228	Adjustable Stop	C.P. Steel
	16	410-377	Support Ring	St. Steel
<b>C5167</b>	17	401-162	Bonnet	Noryl
	18	**	Bonnet Gasket	Rubber
	19	410-369 (10)	Wavy Washer	St. Steel
	20	410-368 (10)	Flat Washer	Synthane
	21	**	Stem	-
	22	**	Shut Off Discs	Buna N
	23	**	Quad Ring	Buna N
	24	*	O-Ring (4-port only)	Buna N
	25	**	O-Ring (3/4 x 15/16 x 3/32")	Buna N
	26	**	Balance Chamber	Celcon
	27	401-158	4 Port Body	Bronze
	27	401-160	3 Port Body	Bronze
	28	401-210	Strainer Caps	Celcon

NOTE: To replace lever handle, convert from square to round stem, order:  
**C5196** Lever Handle  
**C5180** Stem Kit  
**C5178** Temp. Stop

( ) Number of items per package.  
 \* Used on 4-port mixers only.  
 Do discharge will occur when used in 3-port mixer.  
 \*\* Items found in kits on page H-32

218

934 S.E. Sixth Avenue • Portland, Oregon 97214 • (503) 235-2167 • (800) 929-5039 • Fax (503) 239-3774

**C5131**  
227-338 18, 18A, 20, 23, 26, 29  
• Water leaks at valve stem and/or bonnet  
• Water leaks at valve shut-off  
= Motor Replacement

**REPAIR KIT PARTS NOS.  
SERIES 420**



**C3240 C5132**  
227-343 (40° - 90° F), 227-339 (65° - 115° F)  
**C5135**  
227-342 (120° - 175° F) 18, 18A, 23-27, 30  
• Variable or untempered discharge temperature  
= Motor Replacement

**C5130**  
227-290 (model 1, 2, 3, 4)  
**C5133**  
227-340 (model 5, 6, 7, 8) 18, 18A, 29, 32, 33, 34  
• Water leaks at valve shut-off due to worn hot water seat  
• Variable or untempered discharge temperature continues after motor replacement  
= Valve and Hot Water Seat Replacement

**C5134**  
227-341 18, 18A, 28, 29, 31  
• Water leaks at valve shut-off, shut-off disc and/or hot water seat have been replaced  
= Combination Seat Replacement (6 GPM mixer)

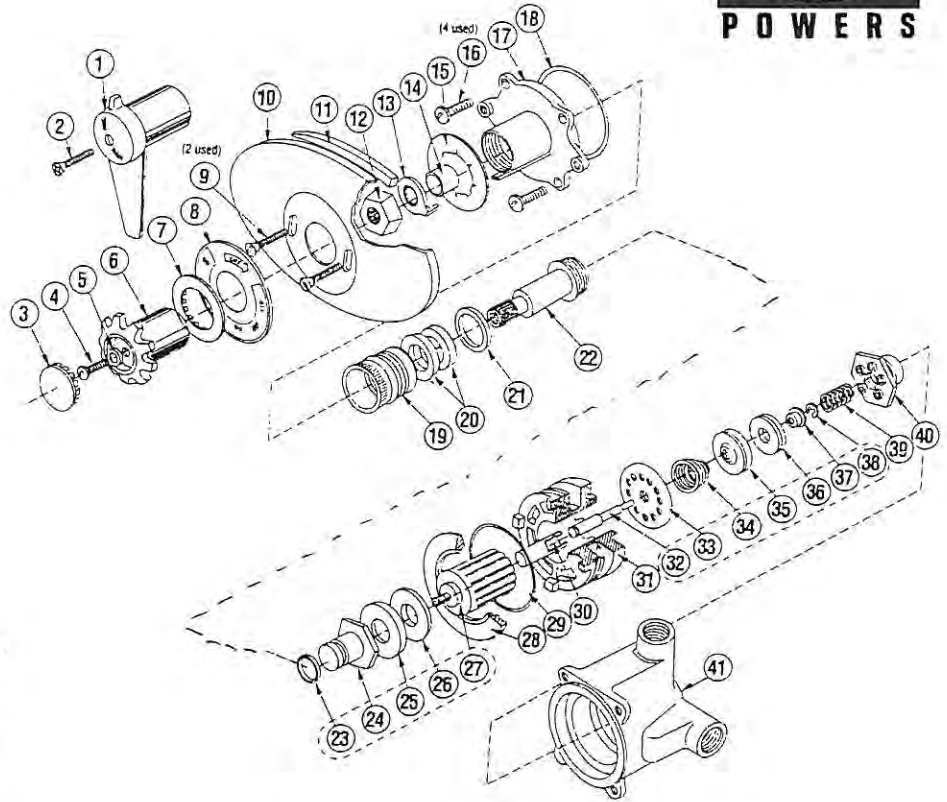
**C5137**  
227-431 (model 5, 6, 7, 8) 18, 18A, 28, 29, 31-34  
• To increase capacity of mixer to 9 GPM (.06 1/s)  
= High Capacity Kit

**C5138**  
227-445 (model 5, 6, 7, 8) 18, 18A, 28, 29, 31-34  
• To decrease capacity of mixer to 1.5 GPM (.091 1/s)  
= Low Capacity Kit

**C5188**  
420-203 18, 18A, 28-31  
• For use when hot water supply temperature is below 120°F, allows discharge temperature to be within 2°F of hot water supply  
= Low Temperature Conversion Kit (110°F)

**C5185**  
420-161, models 7-8  
• Complete Bonnet Assembly Includes items: 13, 14, 16-22, 28

**C5194**  
420-243  
• Complete Bonnet Assembly, to convert model 1-3, to model 8



**PARTS LIST - MODELS 1-7**

ITEM #	PRODUCT #	DESCRIPTION	MATERIAL	ITEM #	PRODUCT #	DESCRIPTION	MATERIAL	
				<b>C5129</b>	22	227-234	Adj. Stem (Models 4, 5, 6)	Brass
<b>C5194</b>	1	Included in	C.P. Brass	<b>C5184</b>	23	420-122	Adj. Stem (Model 7)	Buna-N
	2	420-243	C.P. Zinc		24	*	Motor Quad Ring	Buna-N
	N/A	410-243	C.P. Brass		25	*	Shut-Off Disc Nut	Bronze
	3	Items 3-6, 12A	C.P. Steel		26	*	Shut-Off Disc Retainer	Bronze
	4	Included	C.P. Brass		27	*	Shut-Off Disc	Buna-N
	4A	in	Neoprene		28	*	Thermal Motor	-
	5 & 6	420-481	Lucite		29	227-233	Ring, Retaining	Deltin
	7	Items	Lucite		30	*	Combination Seat "O" Ring	Buna-N
	8	7-11 in	Aluminum		31	*	Motor Sleeve	Brass
	9	Dial Assem.	Brass		32	*	Combination Seat	Bronze
	10	Kit No.	SS		33	*	Valve Assembly	Bronze/C.
	11	420-182	SS		34	*	Valve Return Spring	302SS
	12	227-161	SS			N/A	Hot Water Seat	Noryl
	12A	Use 420-481	SS			N/A	Body (3 port concealed)	Bronze
	13	420-222	SS			N/A	Body (4 port concealed)	Bronze
<b>C5189</b>	420-212	Temp. Stop, Model 7	SS	41		N/A	Body (3 port exposed)	C.P. Bronze
<b>C5192</b>	14	420-223 (12)	Brass					
	15	N/A	Aluminum					
	16	420-214 (12)	SS					
<b>C5186</b>	17	420-200	Brass					
	18	Models 1-6*	Brass					
	18A	Model 7*	Buna-N					
	19	227-188	Buna-N					
	20	*	Brass					
	21	420-221 (5)	Rubber					
			Brass					

\* Items available in kits only.

**IMPORTANT NOTE:** This parts list and expanded parts illustration is for Models 1 through 7 only . . . to be certain you are installing the correct parts, refer to "Model Identification" information.



## REPAIR KITS

### C5202 Gasket and Disc Replacement (mixer and checkstops)

Water leaks at valve stem and/or bonnet

Water leaks at valve shut-off

Water leaks at checkstop

900-030 2 (2), 4 (2), 8 (2), 12, 13, 16, 18 (4)

### C5204 Internals Replacement

### C5203 With mixer handle in MID position hot water flows with cold water checkstop closed or cold water flows with hot water checkstop closed.

Model 1 900-031A

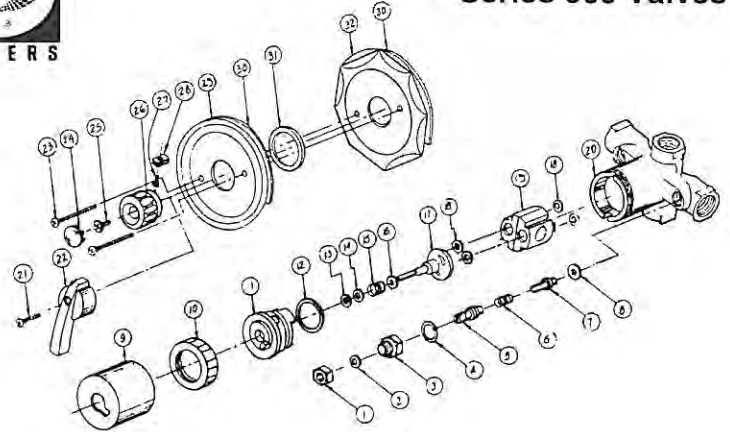
Model 2 900-031

11, 12, 13, 14, 15, 16, 17, 18 (4), 19

KIT NO.	900-109	Stem Extension
	900-119	Thin Wall Mounting
	900-034	Vandal-proof screws (for handle and faceplate)
	900-035	Lucite Handle Assembly
		24, 25, 26, 27, 28
	900-036	Lever Handle Assembly
		21, 22, 27, 28
	900-040	Round Faceplate Assembly
		29, 30, 31
	900-041	Octagon Faceplate Assembly
		30, 31, 32



## BILTMORE Series 900 Valves



Checkstop Replacement C5205  
2 each 1, 2, 3, 4, 5, 6, 7, 8

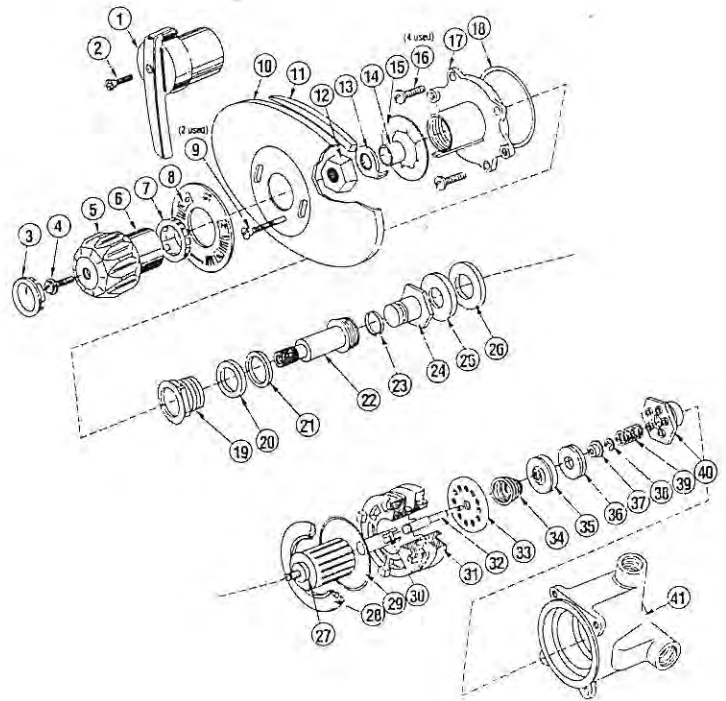
## MODEL 8

## SERIES 420

	1	Included	Lever Handle Screw	C.P. Brass
C5195	2	420-336	Lever Handle Assembly	C.P. Zinc
	N/A	410-565	Tri-Handle Assembly	C.P. Brass
	3	3-6, 12	Plug Button	C.P. Steel
	4	Included	Screws (8-32 x 3/4")	C.P. Brass
	4A	in	Washer	Neoprene
	5&6	420-337	Lucite Handle Assembly	Lucite
	7	Items	Retaining Ring	C.P. Brass
	8	7-11 in	Dial Insert ("F)	Aluminum
	9	Dial Assm.	Screws (2 req'd)	Brass
	10	Kit No.	Dial Plate (Oval)	S.S.
	11	420-335	Dial Gasket	Buna-N
	12	420-337	Handle Insert (Model 8)	Brass
C5189	13	420-212	Temp. Stop Model 7&8	S.S.
C5192	14	420-223 (12)	Spacer Sleeve	Brass
	15	N/A	I.D. Tag	Aluminum
	16	420-214	Screws (4 req'd)	S.S.
C5187	17	420-200A	Bonnet	Brass
	18	*	Bonnet Gasket	Buna-N
	19	420-305	Packing Gland	Brass
	20	*	Packing Ring, Huva	-
	21	420-508	Packing Stop Ring	Brass
C5184	22	420-122	Adj. Stem (Model 7&8)	Buna-N
	23	*	Motor Quad Ring	Buna-N
	24	*	Shut-Off Disc Nut	Bronze
	25	*	Shut-off Disc Retainer	Bronze
	26	*	Shut-off Disc	Buna-N
	27	*	Thermal Motor	-
	28	227-233	Ring, Retaining	Delrin
	29	*	Combination Seat O-Ring	Buna-N
	30	*	Motor Sleeve	Brass
	31	*	Combination Seat	Bronze
	32-38	*	Valve Assembly	Bronze/C.P.
	39	*	Valve Return Spring	302SS
	40	*	Hot Water Seat	NORYL
	N/A		Body (3 port concealed)	Bronze
	41	N/A	Body (4 port concealed)	Bronze
	N/A		Body (3 port exposed)	C.P. Bronze

\*items available in kits only, see page H-35 for kits.

## Model 8



220



934 S.E. Sixth Avenue • Portland, Oregon 97214 • (503) 235-2167 • (800) 929-5039 • Fax (503) 239-3774

**MAINTENANCE: RECOMMENDED REPAIR KITS**

NOTE: To be sure you are installing the appropriate parts into your valve, determine the model number.

**SERIES 427 / 428**

**C5121**

225-357 Includes items 2, 11, 12, 18, 21, 22, 25, 26, 30  
• Water leaks at stem and/or bonnet  
• Flow of water continues after mixer is turned off  
= Gasket & Disc Replacement

**C5122**

**C5123**

**C5124**

225-392 - 5 GPM, 225-393 - 10 GPM, 225-394 - 15 GPM  
Includes items 18, 23-27, 29, 30

• Variable or untempered discharge temperature.  
(NOTE lime deposits can be moved with the use of various commercially available products designed for that purpose)  
= Valve & Cylinder Replacement

**C5127**

**C5125**

**C5126**

225-397 (40°-90° F), 225-395 (65°-115° F), 225-396 (75°-175° F)  
Includes items 18, 19, 11

• Overload spring assembly and mixer piston are free of lime deposits and free moving, yet discharge temperature is variable or untempered.  
= Motor Replacement

**C5120**

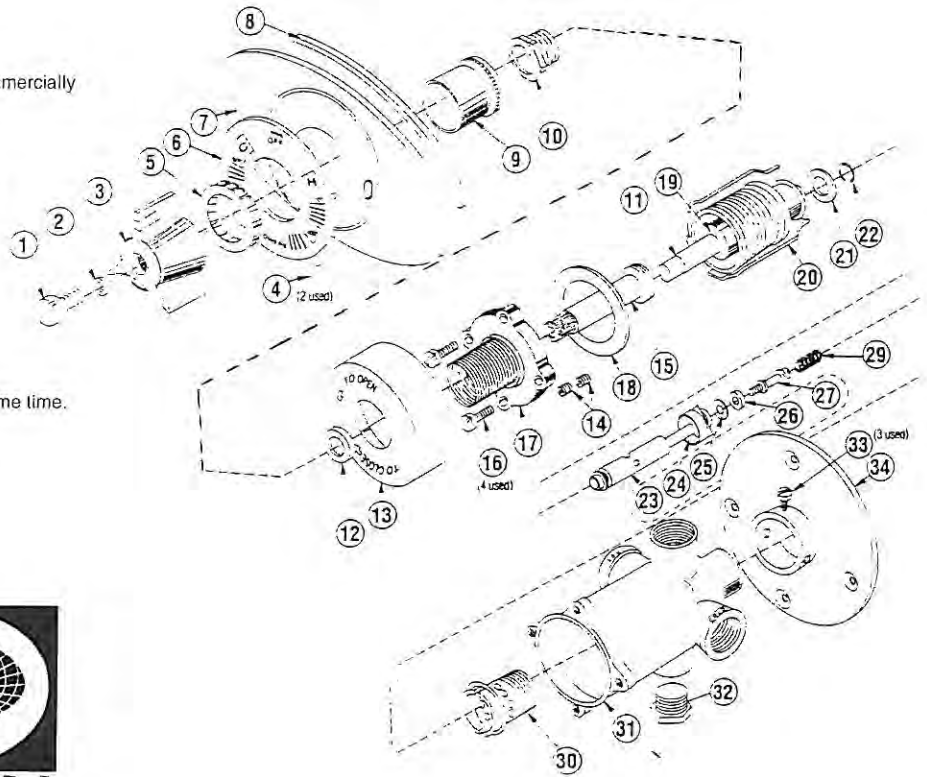
Includes items 23-27, 30

For easy removal of piston cylinder, order special wrench kit, torque piston cylinder to 20-30 lbs. **DO NOT OVERTIGHTEN!**  
The valve assembly and cylinder must both be replaced at the same time.

225-391 - 5 GPM, 225-390 - 10 GPM

If valve has a serial number (on bonnet) of 1946 or lower, complete replacement of internal parts is required.

New Internals For "OLD" Style valve  
Includes all items except handle, dial and body.



**PARTS LIST - MODELS 1-7**

ITEM #	PRODUCT #	DESCRIPTION	MATERIAL	ITEM #	PRODUCT #	DESCRIPTION	MATERIAL
1	Included	Tri-Handle Screw	C.P. Brass	21	*	Disc, Shut-Off	Buna-N
2	In	Washer	Buna-N	22	*	Retaining Ring	Bronze
3	Kit	Tri-Handle	C.P. Zinc	23		Overload Spring Assembly	
<b>C5193</b>	420-242	Screw	Brass	24	Included	Mixer Piston	
5	Included	Retaining Ring	C.P. Brass	25	In Kit	Washer (5 GPM only)	Brass
6	In	Dial Insert (°F)	Aluminum	26	225-379**	Valve Disc	Buna-N
7	Kit	Dial Plate	SS	27		Disc Holder	SS
8	420-182	Dial Gasket	Buna-N	29	*	Return Spring	302SS
9	225-294A	Lock Ring	Brass	30	*	Piston Cylinder	
10	225-403	Packing Gland	Brass	31	225-286	Body (Rough Bronze)	Bronze
11	047-009	O-Ring	Buna-N		225-286G	Body (Brite Chrome)	Bronze/C.P.
12	*	Huva Cup	Buna-N	32	200-046	Pipe Plug for 427	Brass
13	225-261A	Mixing Plate Cover	C.P. Brass		200-046G	Pipe Plug for 428	Brass/C.P.
<b>C5119</b>	225-253	Screw, Limit (2 req'd)	Brass	33	Included in	Screws, Wall Flange (3)	C.P. Brass
<b>C283</b>	225-238G	Stem	Brass	34	225-089A	Wall Flange	
16	030-126	Bonnet Screw (4 req'd)	Brass				
<b>C5128</b>	225-419	Mixer Bonnet	Brass				
18	*	Gasket	Rubber				
19	*	Thermal Motor					
20	225-045	Cylinder (5 GPM only)	Brass				

\*\* Use Kit 225-379 for 15 GPM Mixer (standard)  
Use Kit 223-377 for 5 GPM Mixer, 225-378 for 10 GPM Mixer  
\* Item available in kits only

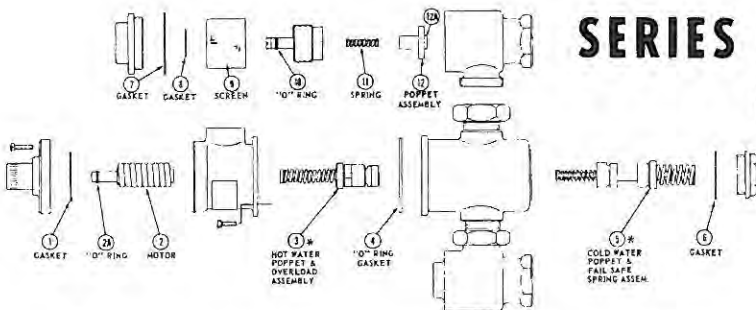
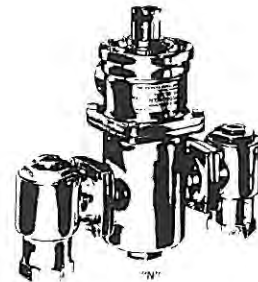
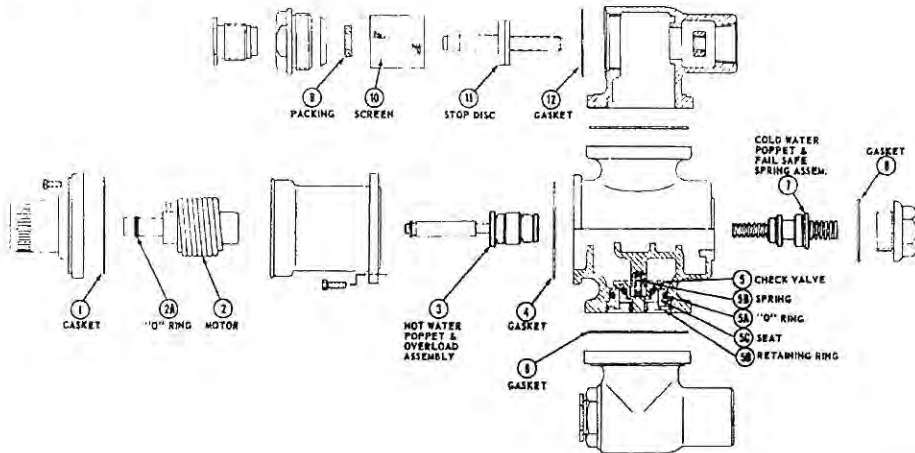


## POWERS N HYDROGUARD (Flanged Inlet)

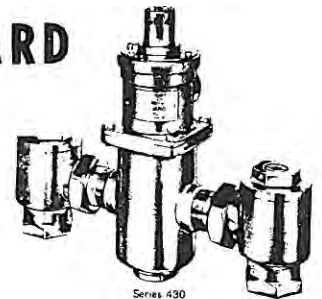
To determine model number of Hydroguard, refer to nameplate on body assembly.

5  
↑  
MODEL NUMBER

Y4  
↑  
DATE OF MANUFACTURE



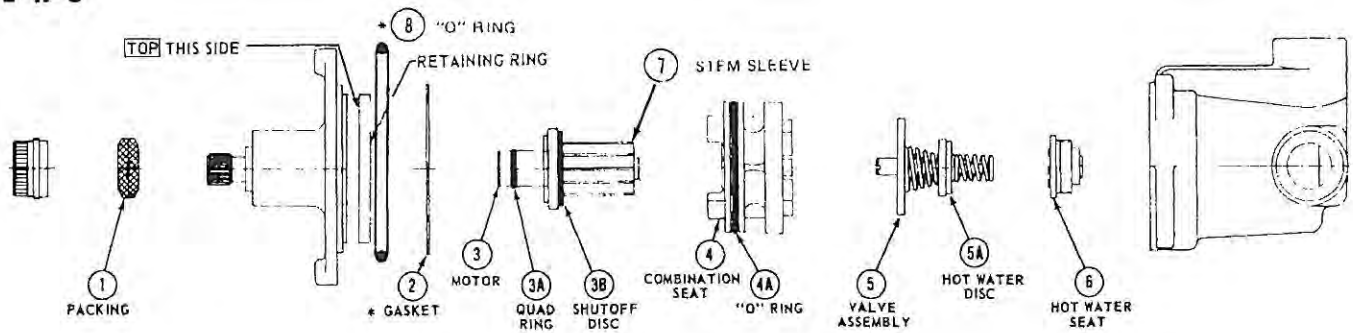
## SERIES 430 HYDROGUARD (Union Inlet)



TROUBLE SHOOTING		TEMP RANGE	Recommended Repair Kits					
			431	432	433	434	N-45	N-125
MOTOR REPLACEMENT	Discharge temperature varies Flow of water is shut off	40° - 90° F	390-329 C5160	390-330 C5161	390-331 C5162	390-332 C5163	C5151	C5158
		65° - 115° F	390-295 C5147	390-299 C5151	390-303 C5153	390-307 C5158	390-299 (65-115F)	390-307 (65-115F)
		85° - 160° F	390-296 C5148	390-300 C5152	390-304 C5155	390-308 C5159	390-300 (85-160F)	390-308 (85-160F)
		Includes items: 1, 2 and 2A						
STRAINER REPLACEMENT *	Flow of water is less than desired: Check for low supply pressures or restricted supply line		230-134 C5141	230-134 C5141	230-136 C5143	230-136 C5143	390-288	390-292
		Includes Items: 7, 8, 9 and 10				Includes items 9, 10, 11, and 12		
CHECKSTOP REPLACEMENT	H.W. backs into cold water line or vice versa Unable to shut off flow by means of stop valve		230-135 C5142	230-135 C5142	230-137 C5144	230-137 C5144	390-287	390-291
		Includes Items: 7, 8, 10, 11, 12, 12A				Includes items 5, 5A, 5B, 5c, 5D, 6		
GASKET AND DISC REPLACEMENT	Water leaks at body gaskets		390-294 C5146	390-298 C5150	390-302 C5154	390-306 C5157	390-286	390-290
		Includes items: 1, 2A, 4, 6, 7, 10, 12A				Includes Items:		
MIXING VALVE REPLACEMENT	Discharge temperature varies after motor replacement: First, check pressure drop across mixer.		390-297 C5149	390-301 C5164	390-305 C5156	390-309 C5165	390-289 (Model 1) 390-301 (Model 2)	390-293 (Model 1) 390-309 (Model 2)
		Includes: 3, 4, 5, 6				Includes items: 3, 4, 7, 8		
		* Strainer, Checkstop Repair Kits contain parts for one (1) pair.						



## SERIES 440 FOTOGUARD & FOTOPANEL Type 440-1000, -1500, -1550, & -2000



\*Use either (2) or (8) depending on existing bonnet seal

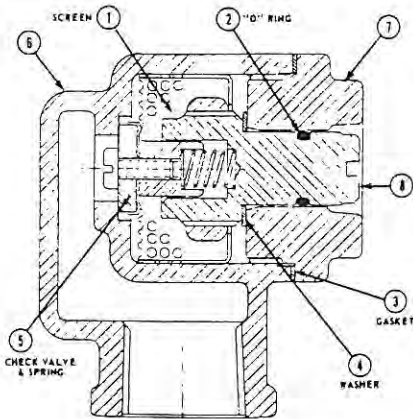
TROUBLE SHOOTING		Recommended Repair Kit	
GASKET AND DISC REPLACEMENT	1. Water leak at stem and/or bonnet (Item 1 for models 4, 5, 6 and 7) 2. Flow of water continues after mixer turns off	<b>227-338</b> Includes items: 1, 2, 3A, 3B, 4A & 8	<b>C5131</b>
MOTOR REPLACEMENT	3. Variable or untempered discharge temperature	(65-115°F) <b>227-339</b> Includes Items: 2, 3, 3A, 3B, 7 & 8	<b>C5132</b>
VALVE AND HOT WATER SEAT REPLACEMENT	4. Flow of water continues after mixer is turned off due to worn hot water seat (6) 5. Variable discharge temperature continues after replacement of motor (3)	<b>227-340</b> (Models 5, 6 & 7) Includes items: 2, 4A, 5, 6, 7 & 8	<b>C5133</b>
COMBINATION SEAT REPLACEMENT	6. Flow of water continues after mixer is turned off and shutoff disc (3B) and/or hot water seat (6) has been replaced	<b>420-558</b> Includes items: 2, 4, 4A & 8	<b>C5136</b>
HIGH CAPACITY KIT	7. To increase capacity of mixer to 9.0 G.P.M. @ 45 P.S.I. diff.	<b>227-431</b> (Models 5, 6 & 7) Includes items 2, 4, 4A, 5, 6 & 8	<b>C5137</b>
LOW CAPACITY KIT	8. To decrease capacity of mixer to 1.5 G.P.M. @ 45 P.S.I. diff.	<b>227-445</b> (Models 5, 6 & 7) Includes items 2, 4, 4A, 5, 6 & 8	<b>C5138</b>

To determine model number of Hydroguard, refer to nameplate on body assembly.

**5**  
↑  
MODEL NUMBER

**Y4**  
↑  
DATE OF MANUFACTURE

## CHECKSTOP REPAIRS / FOTOGUARD PARTS

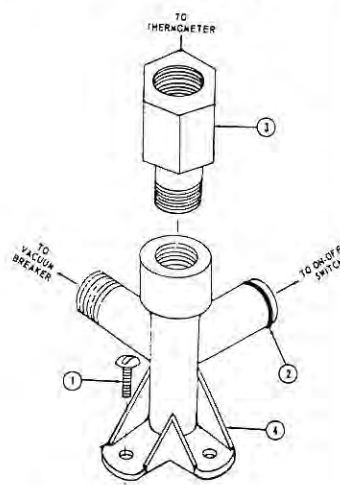


### CURRENT TYPE 22

Union and Screwed: Used on Shower Mixers  
Concealed and Exposed Fotoguards

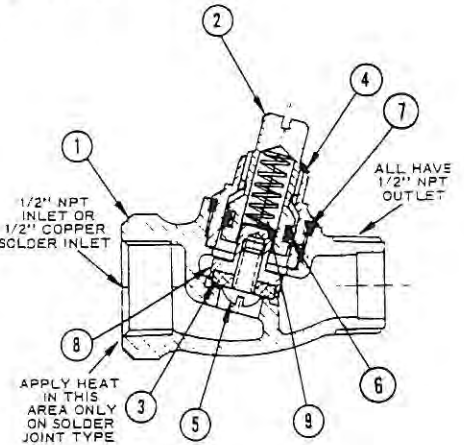
- To replace check valve, use Repair Kit 230-132 **C5140** (includes items 1, 2, 3, 4, 5)
- To replace gaskets, use Repair Kit 230-131 **C5139** (includes items 2, 3 and 4)

NOTE: Each repair kit contains parts for one pair.



### THERMOMETER AND MANIFOLD ASSEMBLY

- C5200** Item #4  
030-542J Item #1  
047-125 Item #2  
440-177 Item #3 (only on 440-3000)  
894-3897 Thermometer



### C5116

Model #141-845

To replace internal parts, use Repair Kit (includes items 3, 5, 6, 7, 8 and 9)

Part numbers shown are for a pair of check-stops.  
1/2" NPT screwed inlet straight:

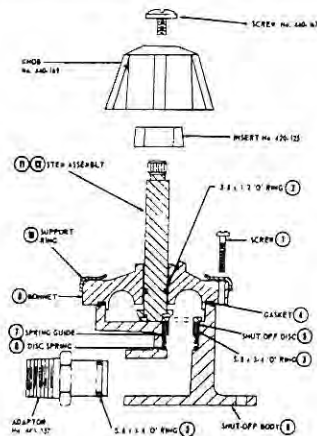
- C5117** 141-176 Rough Bronze  
**C5118** 141-177 Polished Chrome Plate  
141-307 Bright Chrome Plate



### POWERS FOTOGUARD ON-OFF VALVE

#### C5197

Replacement Kit No. 440-145 includes items 2 thru 6  
Complete On-Off replacement unit no. **C5201** includes items 1 thru 11 completely assembled. This cannot be used in Fotopanel 440-3000 because 440-3000 has the long stem assembly. Models 1-4 use 141-191



Cat No.	Model #	Item	Qty.	Description
	030-889	1	4	10-24 x 7/8 (M 8.0-1x 22mm) screw
	410-366 (25)	2	1	3/8 x 1/2 (10 x 13mm) O-Ring
	440-223 (7)	3	3	5/8 x 3/4 (16 x 19mm) O-Ring
		4	1	Gasket
		5	1	Shutoff Disc
		6	1	Disc Spring
	440-158	7	1	Spring Guide
	410-346	8	1	Bonnet
	440-154	9	1	Body
	401-081	10	1	Support Ring
<b>C5198</b>	440-159	11	1	Stem Assy. 3-3/16" (81mm) long (440-1000 & 2000)
	440-160	12	1	Stem Assy. 4-15/16" (125mm) long (440-3000 only)
	410-144	13	1	Flat Washer
	410-369 (10)	14	1	Wavy Washer

### POWERS FOTOGUARD ON-OFF VALVE

#### COMPLETE CHECKSTOP ASSEMBLY - PART NUMBERS

	FOTOPANEL		FOTOGUARD	
	440-1000 and -3000	440-2000	440-1500 and -1510	440-1550
Used On	440-1000 and -3000	440-2000	440-1500 and -1510	440-1550
Description	Rough Brass Union Inlet	Rough Brass Screw Inlet	Bright Chrome Union Inlet	Rough Brass Screw Inlet
R.H. with Vol Conl. Part No.	230-146	230-227	230-151	230-156
L.H. Part No.	230-139	230-228	230-152	230-040

DOES NOT INCLUDE ITEMS 1-5

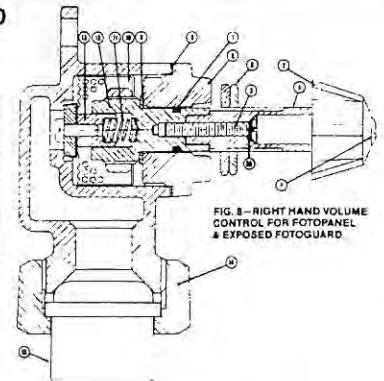


FIG. 8 - RIGHT HAND VOLUME CONTROL FOR FOTOPANEL & EXPOSED FOTOGUARD

#### C5139 No. 230-131

(includes 7, 8, & 9)

Strainer Checkstop Gasket Kit

#### C5140 No. 230-132

(includes 7, 8, 9, 10, 11 & 13)

Strainer Checkstop Poppet Kit

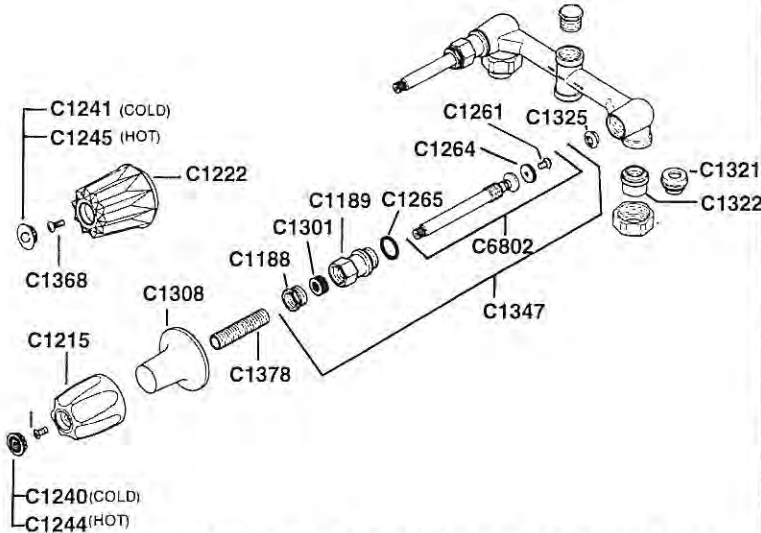
ITEM	PART NAME	PART NO	FOTOPANEL	USED ON FOTOGUARD
1	3/4-24 x 7/8 Screw (M9.5-1 x 13mm)	032-455A	-	All Models
		440-168	All Models	-
		440-035	-	All Models
2	Volume Knob	440-172	All Models	-
		032-072	All Models	-
3	8-32 x 2 1/2 Screw (M4.2-0.7 x 19mm)	032-071	-	All Models
		032-071	-	All Models
3A	Lock Washer	046-007K	All Models	All Models
		440-121	-	440-1500, -1510
4	Volume Stem Extension	C5199	440-1000, -2000	-
		440-171	440-3000	-
		230-223	-	440-1500, -1510
		403-005G	All Models	All Models
5	Nut (2 Req'd)	-	-	-
7 thru 11 & 13	(7) O Ring; (8) Bonnet Gasket; (9) Stem Gasket; (10) Screen; (11) Poppet Spring; (13) Poppet	-	These parts are included in parts kits	
12	Stem	C5145	-	All R.H.
		230-080	-	All L.H.
14	Union Nut	801-004	All except 440-2000	-
		801-004G	-	440-1500, -1510
		801-005	All except 440-2000	-
15	Tailpiece	801-005	-	-
		801-005G	-	440-1500, -1510

224

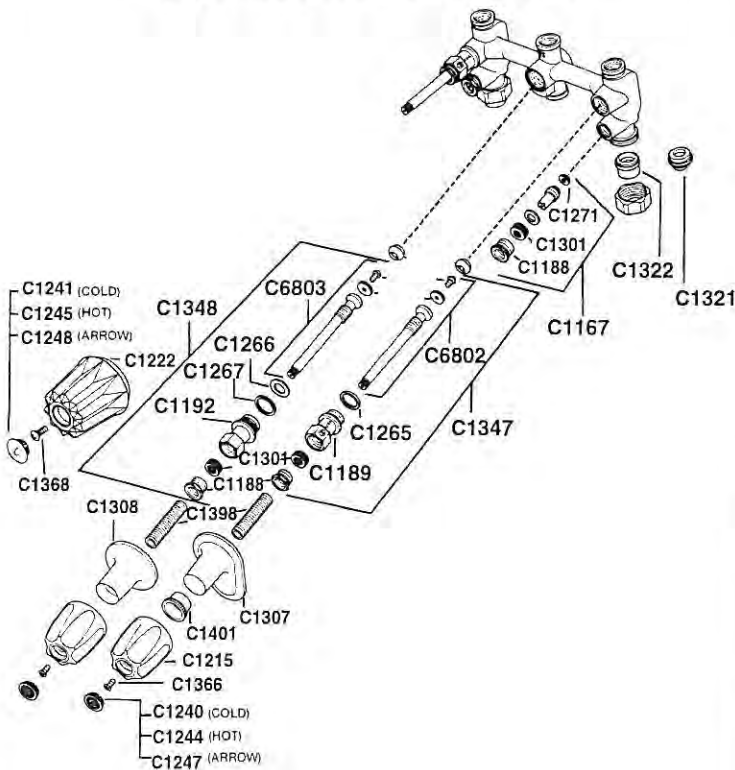


**PRICE PFISTER**

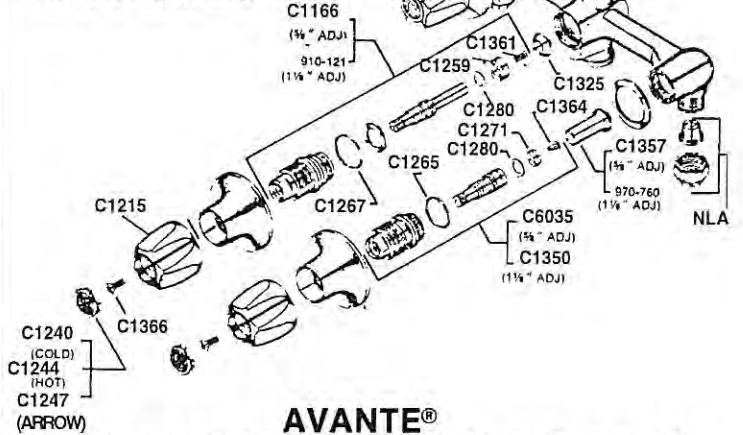
**8" TWO VALVE TUB/SHOWER DIVERTER**  
CATALOG NO'S: 03 SERIES  
05 SERIES  
07 SERIES



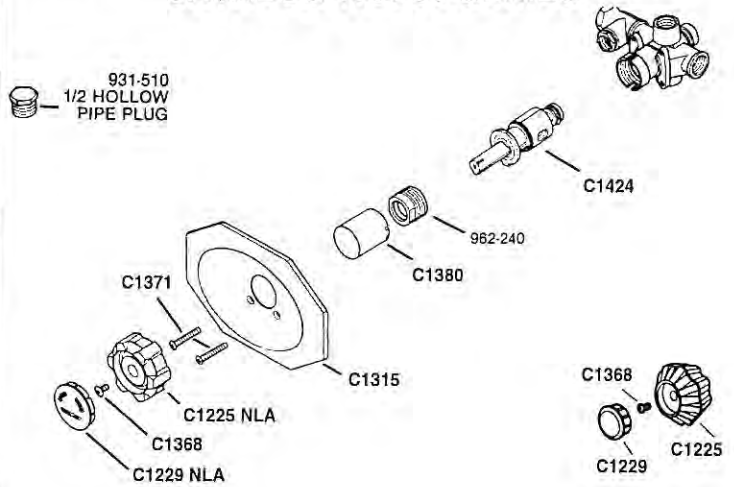
**8" THREE VALVE TUB/SHOWER DIVERTER WITH INTEGRAL STOPS**  
CATALOG NO. 01 SERIES



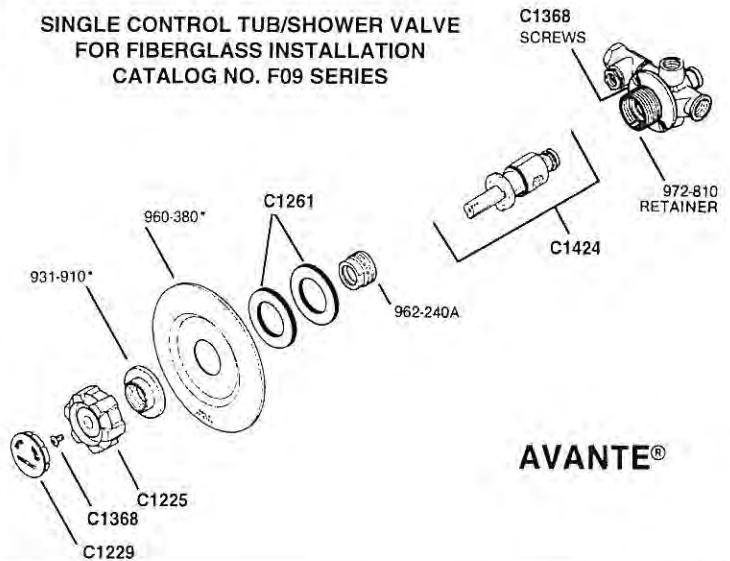
**8" THREE VALVE TUB/SHOWER DIVERTER FOR MOBILE HOMES**



**AVANTE®**  
**SINGLE CONTROL TUB/SHOWER VALVE**  
CATALOG NO. 09 SERIES



**SINGLE CONTROL TUB/SHOWER VALVE FOR FIBERGLASS INSTALLATION**  
CATALOG NO. F09 SERIES

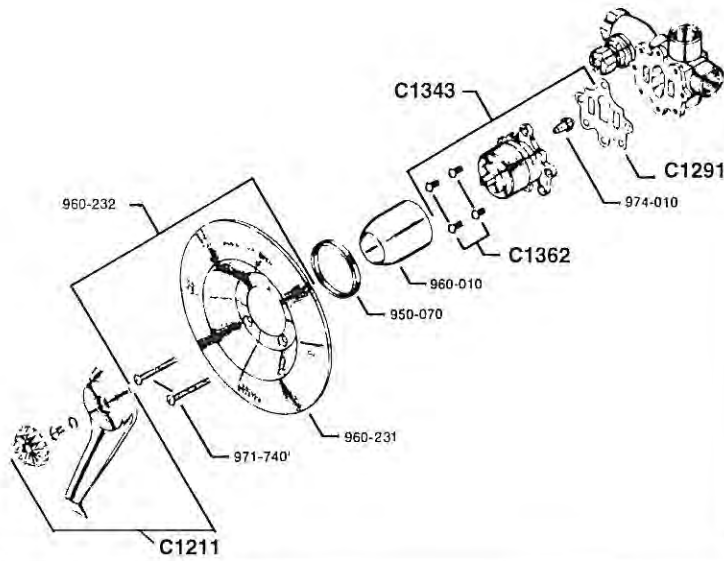


225

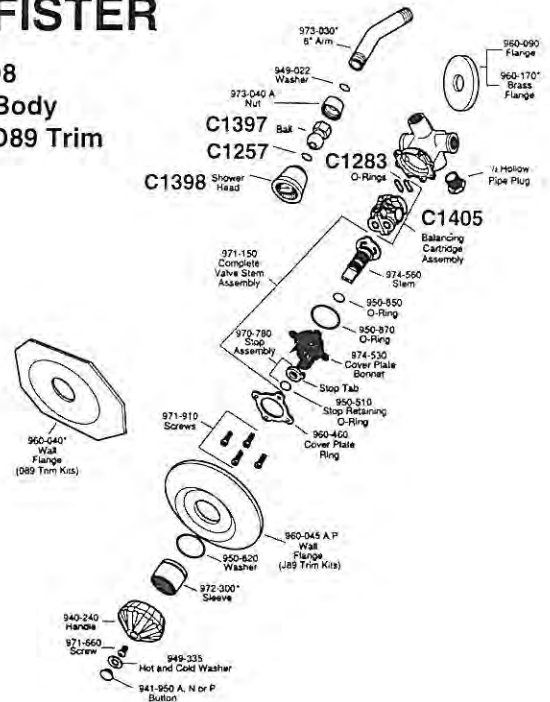


### PRICE PFISTER

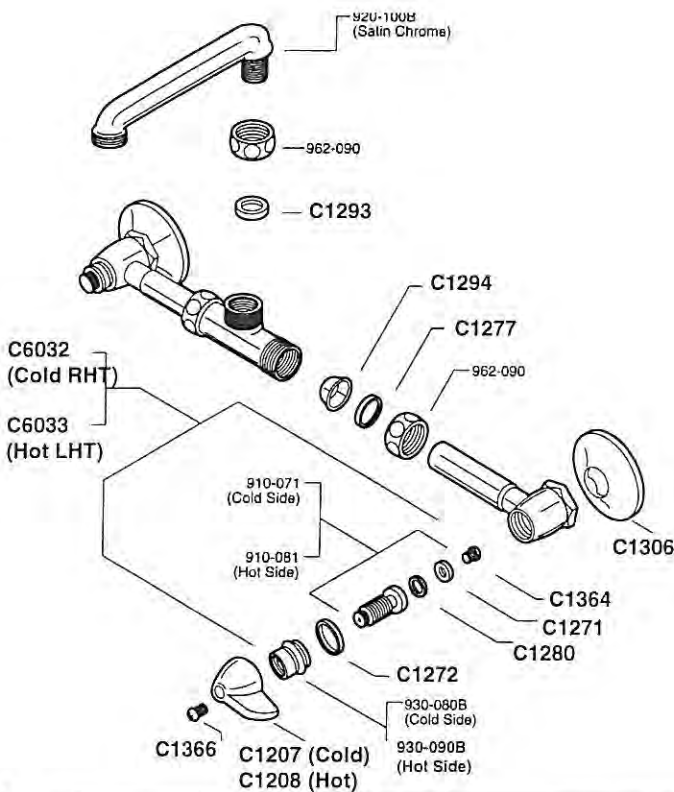
#### SERIES O9 Single Handle Tub-Shower, Tub or Shower Units



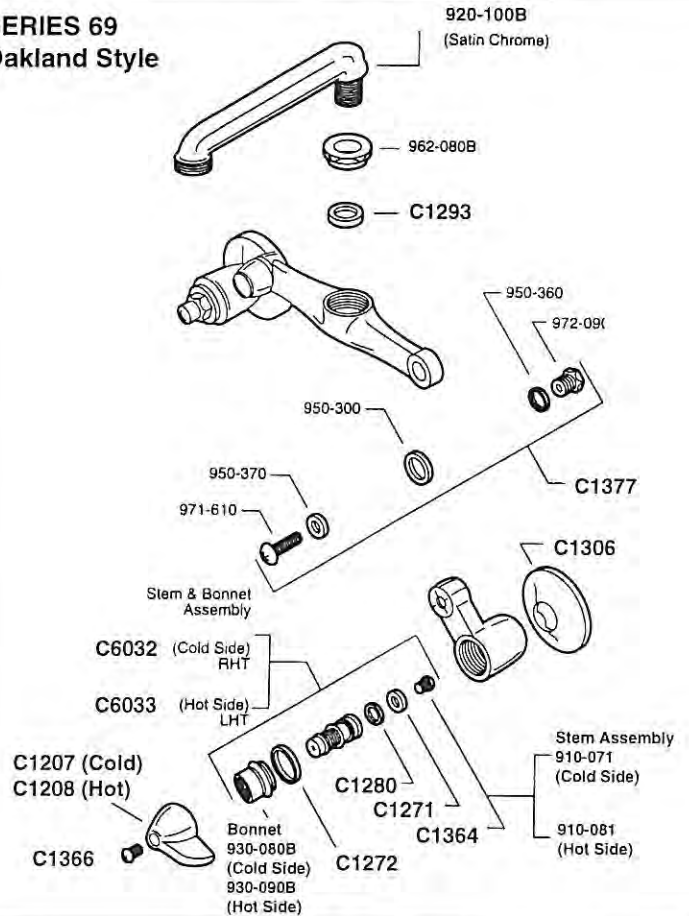
#### SERIES O8 JX8/OX8 Body with J89/O89 Trim



#### SERIES 69 Beverly Style

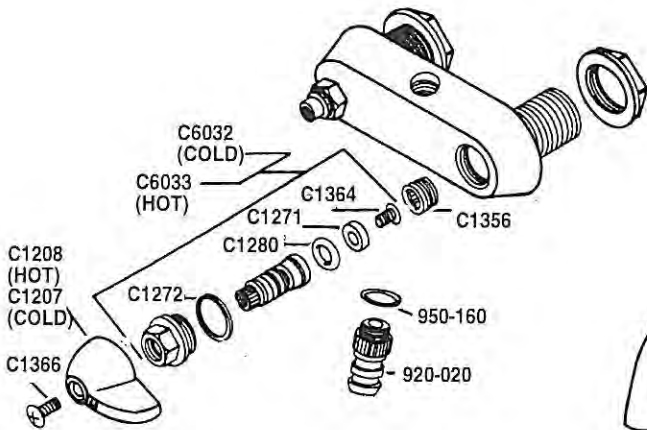


#### SERIES 69 Oakland Style

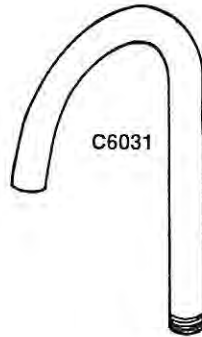




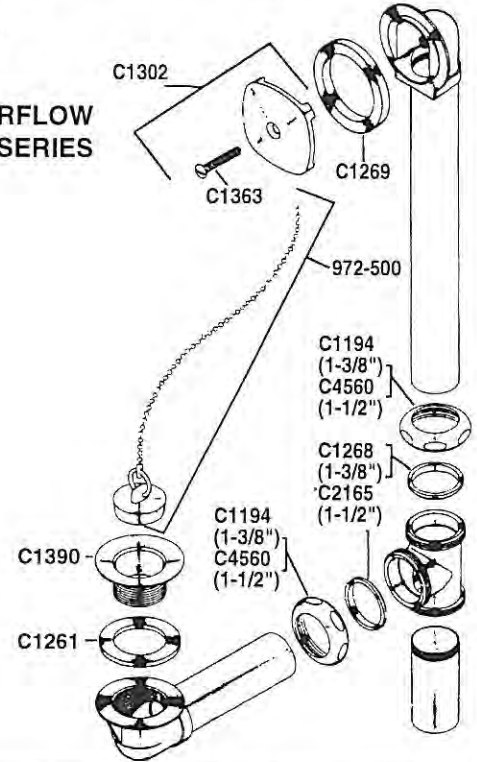
**PRICE PFISTER**



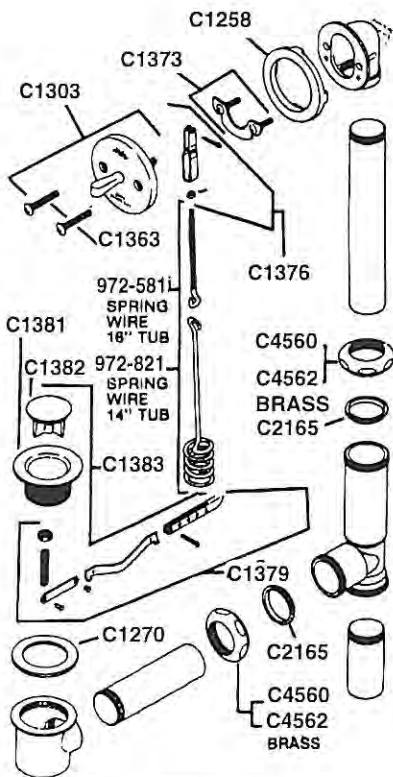
**BATH COCK  
CATALOG NO. 23 SERIES**



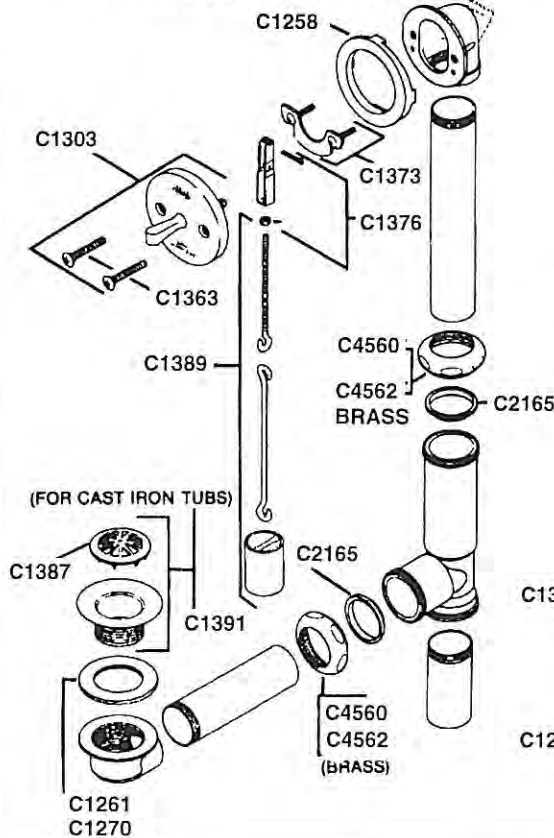
**WASTE & OVERFLOW  
CATALOG NO. 17 SERIES**



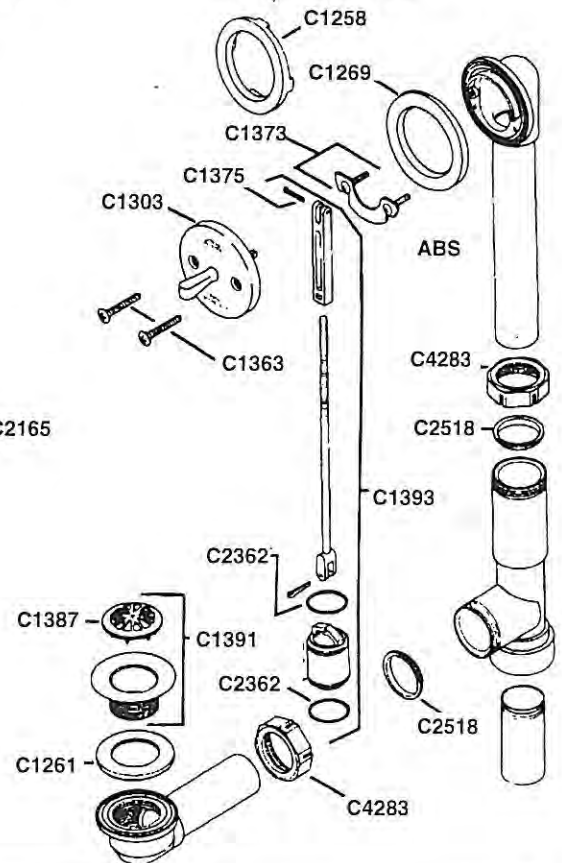
**POP-UP WASTE & OVERFLOW  
CATALOG NO. 21 SERIES**



**TRIP LEVER WASTE AND OVERFLOW  
CATALOG NO. 19 SERIES**



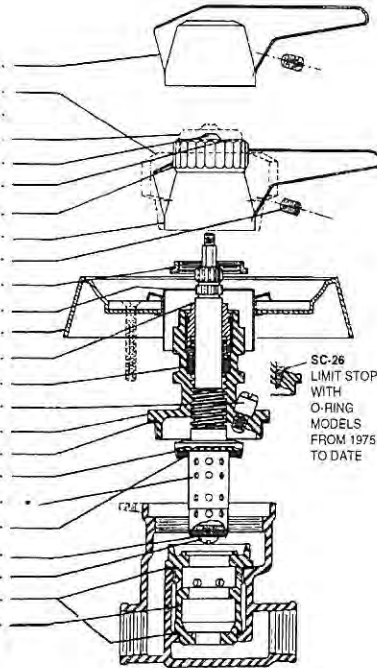
**19. SERIES ABS**





SAFETYMIX WASHER & GASKET KIT # C4118 includes:

CAT. NO.	OEM NO.	PART NAME
C4151	RC-14	Lever handle
	DC-14	Lucite handle (vol. control)
	LC-14	Lucite handle (not shown)
	DC-14B	Volume control knob
	SC-14A	Locking screw w/washer
	SC-14C	Volume dial
	SC-14B	Volume control knob
	SC-14	Lever handle (vol. control)
	SC-15	Handle screw
C4158	SC-18	Dome lock nut
C4157	SC-13	Dome cover includes SC-18
	SC-12	Escutcheon & screw
	SC-7	Packing nut
	SC-17	Packing
	SC-22A	Limit stop assy.
C4112	(SC-2)	Cap
	SC-19	Cap gasket
	SC-9	Cold water retainer
C4114	(C-5)	Flow control spindle
	SC-11	Cold washer
	SC-10	Hot washer
	SC-10A	Hot washer screw
	SC-20/21	Top & bottom seat gasket
C4113	(SC-3)	Renewable seat



OEM NO.	PART NAME
SC-9	Cold washer retainer
SC-10/11	Hot and cold washers
SC-17	Spindle packing
SC-19	Cap gasket
SC-10A	Hot washer screw
SC15	Handle screw

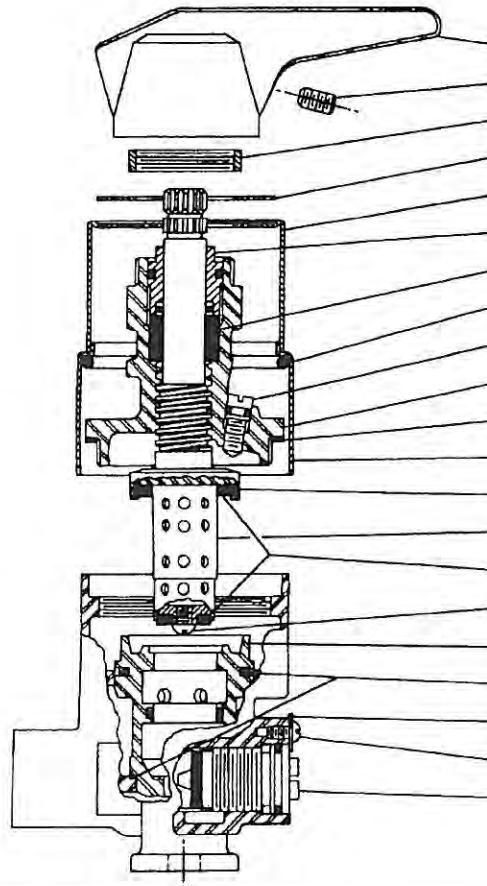
**NOTE:** When valve has a high frequency of use and requires repair, replace Renewable seat and Spindle assembly simultaneously.

REPAIR UNITS (complete with washers)

CAT. NO.	OEM NO.	PART NAME
C4113	(SC-3)	Renewable seat unit complete
C4114	(C-5)	Spindle assembly Model 0 (less vol. control)

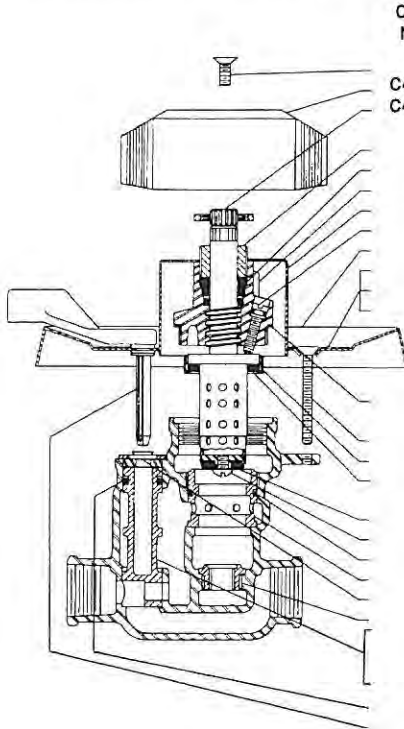
\*SC-5 Spindle assembly  
**NO LONGER AVAILABLE**  
 (Vol. control)  
 Replace with C4114 Spindle and C4151 Handle

## SAFETYMIX HYDAPIPE



CAT. NO.	OEM NO.	PART NAME
C4151	RC-14	Lever handle
	SC-15A	Handle screw
C4158	SC-18	Dome lock nut
	SC-13C	Dial
	SC-13B	Dome cover
	SC-7	Packing nut
	SC-17	Packing
	HP-10A	O-ring
	SC-26	Limit stop with o-ring
C4112	SC-2	Cap
	SC-19	Cap gasket
	HP-10	Body cover
	SC-9	Cold washer retainer
C4114	C-5	Flow control spindle assembly
	SC-10/11	Hot & cold washers
	SC-10A	Hot washer screw
C4113	(SC-3)	Renewable seat
	SC-20/21	Top seat o-ring & bottom seat gasket
	HP-18A	Stop retainer washer
	HP-18	Stop retainer screw
	HP-17ASB	Stop spindle





CAT. NO.	OEM NO.	PART NAME
	S-32	Handle screw
C4152	S-31	Handle
C4156	SA-10	Flow control spindle
S-17		Packing nut
S-16		Packing, o-ring & washer
S-12		Cap assembly
S-19/20		Dome cover & lock nut
S-34		Limit stop with o-ring
S-27		Escutcheon
S-29A		Dial (Model 4)
S-29B		Dial (Model 5)
S-29C		Dial (Model 6)
S-11		Cap gasket
S-28		Escutcheon screws (two)
S-7		Cold washer retainer
S-8		Cold washer
S-6		Hot washer
S-5		Hot washer screw
S-2		Cold seat o-ring
S-3		Cold renewable seat
S-21		Hold down washer w/screws
S-1		Hot renewable seat
S-23A		Volume spindle (Model 5) Color black
S-23B		Diverter spindle (Model 6) Color grey or beige
S-24		Spindle o-ring
S-30		Diverter - volume handle
S-35A		Diverter - volume handle
S-35B		Diverter - volume handle



## SAFETYMIX 'ETTE' SERIES II

PRESSURE-BALANCING MIXING VALVE FROM 1969 TO 1980.  
Identify Valve by Dial Marking "Safety mix 'ette'" Series II and MODEL 4, MODEL 5 or MODEL 6.

- MODEL 4 Valve with temperature control only
- MODEL 5 Valve with temperature and volume control only
- MODEL 6 Valve with temperature control and diverter

SERIES II WASHER & GASKET KIT - S includes:			
OEM NO.	PART NAME	OEM NO.	PART NAME
S-6/8	Hot and cold washers	S-11	Cap gasket
S-7	Cold washer retainer	S-5	Hot washer screw
S-16	Packing, o-ring & washer	S-32	Handle screw

NOTE: When valve has a high frequency of use and requires repair, replace Renewable seat and Spindle assembly simultaneously.

REPAIR UNITS (complete with washers)		
CAT. NO.	OEM NO.	PART NAME
	S-1/3	Hot & cold renewable seat
C4156	(SA-10)	Spindle assembly



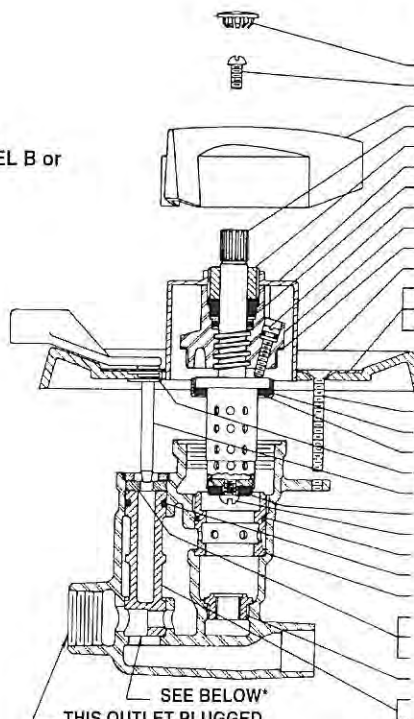
## Temptrol

PRESSURE-BALANCING MIXING VALVE FROM 1968 TO DATE.  
Identify Valve by Dial Markings TEMPTROL and MODEL A, MODEL B or MODEL C.

- MODEL A Valve with temperature control and diverter
- MODEL B Valve with temperature and volume control
- MODEL C Valve with temperature control only

CAT. NO.	OEM NO.	COMPOSITE PARTS PART NAME
C4166	(TA-4)	Hot Seat (T-1), Cold seat (T-3), Cold seat o-ring (T-2)
C4167	(TA-9)	Hot washer screw (T-5), Hot washer (T-6), Cold water retainer (T-7), Cold washer (T-8), Cap gasket (T-11) Spindle assembly
C4156	(TA-10)	Diverter-volume spindle (T-23), O-ring (T-24) - For Model A valve Color beige or grey
C4165	*(TA-25-A)	Volume spindle (T-24), O-ring (T-24) - For Model B valve - Color black
	*TA-25-B	Volume spindle (T-24), O-ring (T-24) - For Model B valve - Color black

NOTE: When valve has a high frequency of use and requires repair, replace Renewable seat and Spindle assembly simultaneously.



CAT. NO.	OEM NO.	PART NAME
	T-33	Plug button
	T-32	Handle screw
C4162	T-31	Temperature control handle
C4156	TA-10	Flow control spindle
	T-17	Packing nut
C4160	T-19/20	Dome cover & lock nut
C4159	T-16	Packing, o-ring & washer
	T-34	Limit stop with o-ring
	T-12A	Cap assembly
	T-11	Cap gasket
	T-27	Escutcheon
T-29A		Dial (Model A)
	T-29B	Dial (Model B)
	T-29C	Dial (Model C)
	T-28	Escutcheon screws (two)
	T-7	Cold washer retainer
	T-8	Cold washer
	T-27CL	Escutcheon clip
C4161		Diverter - volume handle
	T-6	Hot washer
	T-5	Hot washer screw
	T-2	Cold seat o-ring
	T-24	Spindle o-ring
	T-3	Cold renewable seat
	T-21	Hold down washer w/screw
	T-21A	Hold down washer w/screws (2 holes)
	T-21C	Diverter retainer
	T-1	Hot renewable seat
	T-23	Diverter spindle (Model A) *
	T-23	Diverter spindle (Model A) *
C4163	T-35A	Hot seat removal tool
C4164	T-35B	Cold seat removal tool

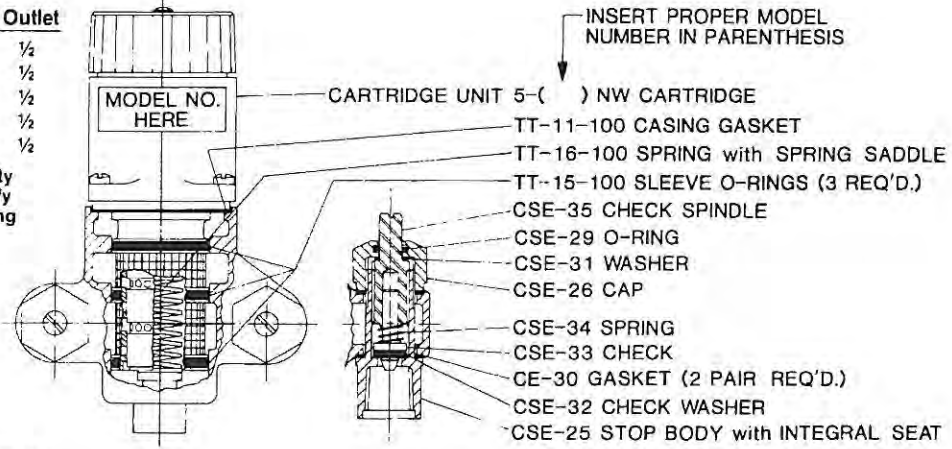
SEE BELOW\*  
THIS OUTLET PLUGGED  
ON MODEL B VALVES

## TEMPCONTROL (formerly Temptrol) THERMOSTATIC WATER CONTROLLER

*Simmons*®

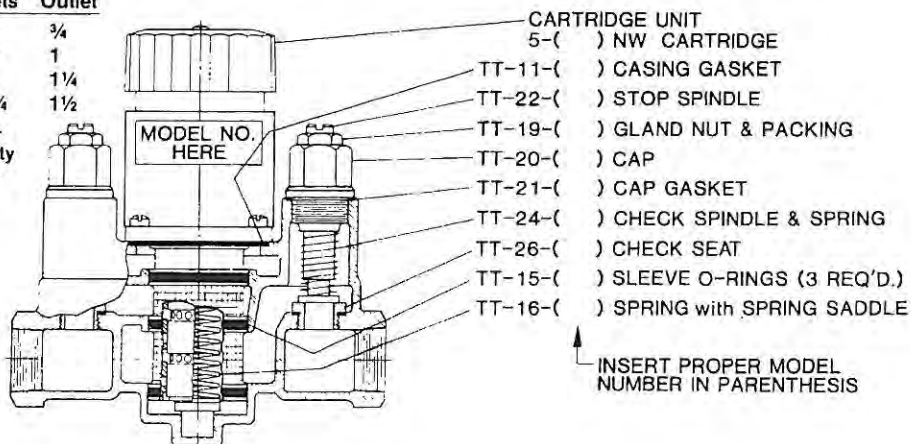
Model No.	Inlets	Outlet
5-100	½	½
5-101	½	½
5-101P	½	½
5-102	½	½
5-102P	½	½

Suffix HC High Capacity  
Model specify  
when ordering  
cartridge



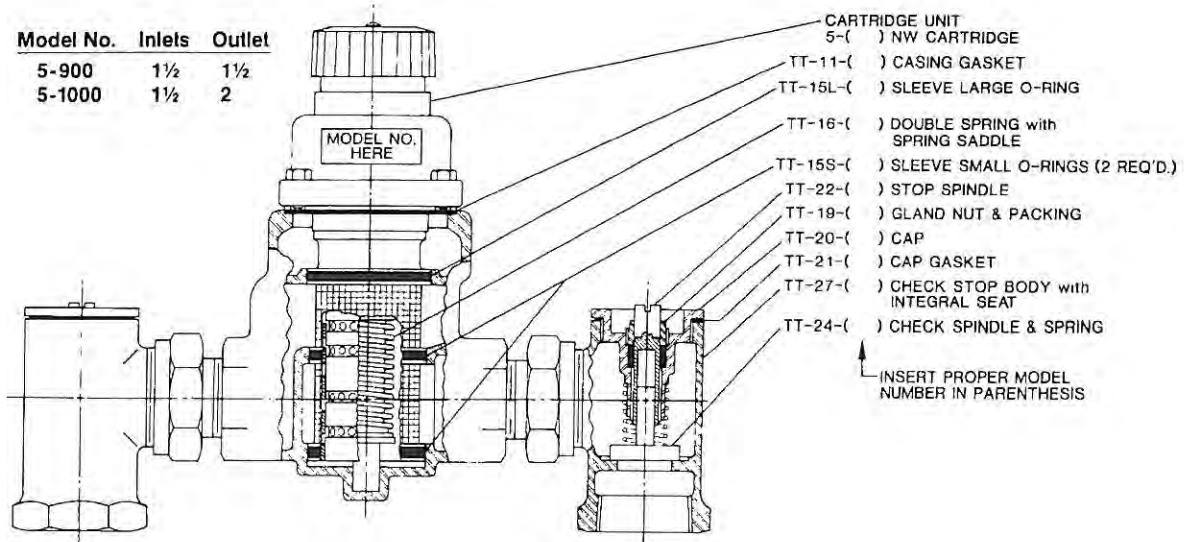
Model No.	Inlets	Outlet
5-200	¾	¾
5-400	¾	1
5-500	1	1¼
5-700	1¼	1½

5-200-1 } lower  
5-400-1 } capacity  
          } units

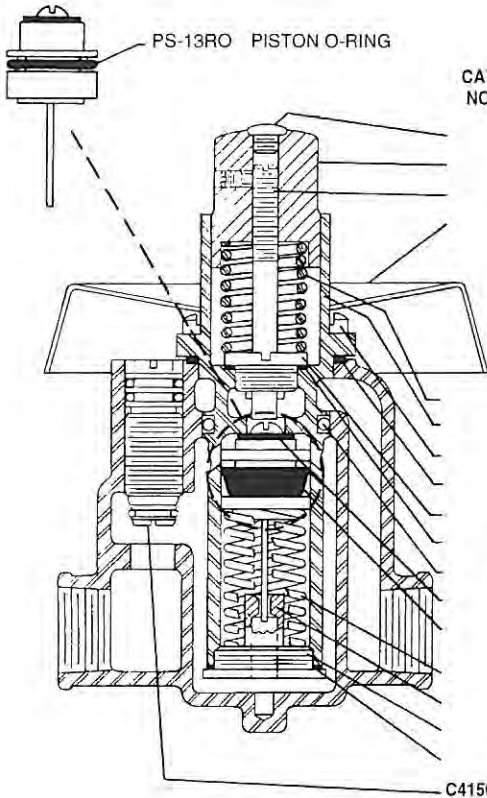


INSERT PROPER MODEL  
NUMBER IN PARENTHESIS

Model No.	Inlets	Outlet
5-900	1½	1½
5-1000	1½	2



INSERT PROPER MODEL  
NUMBER IN PARENTHESIS



CAT. NO.	OEM NO.	PART NAME
	PS-2B	Screw
	PS-2	Knob & screw
	PS-3	Push-rod
	PS-4	Escutcheon
	PS-5	Escutcheon screw (2 reqd) Not shown
	PS-2C	Knob spring
	PS-6	Cap
	PS-7	Cap screw
	PS-8	Cap gasket
	PS-9	Guide nut w/o-ring
	PS-10	Guide nut gasket
	PS-11	Cap o-ring
	PS-12	Shut-off washer & screw
	PS-13	Cup-washer & control rod piston unit (Order PS-13R)
	PS-14	Spring
	PS-15	Control rod sleeve (Order PS-13R)
	PS-17	Sleeve retainer (Order PS-13R)
	PS-18	Retainer washer
	PS-20	Integral stop unit

*Symmons*®

## SHOWEROFF "60"

AUTOMATIC SHOWER LIMITING VALVE FROM 1960 to 1983.  
Illustration of replacement piston unit after 1983.  
Comes with C4149 Repair Unit

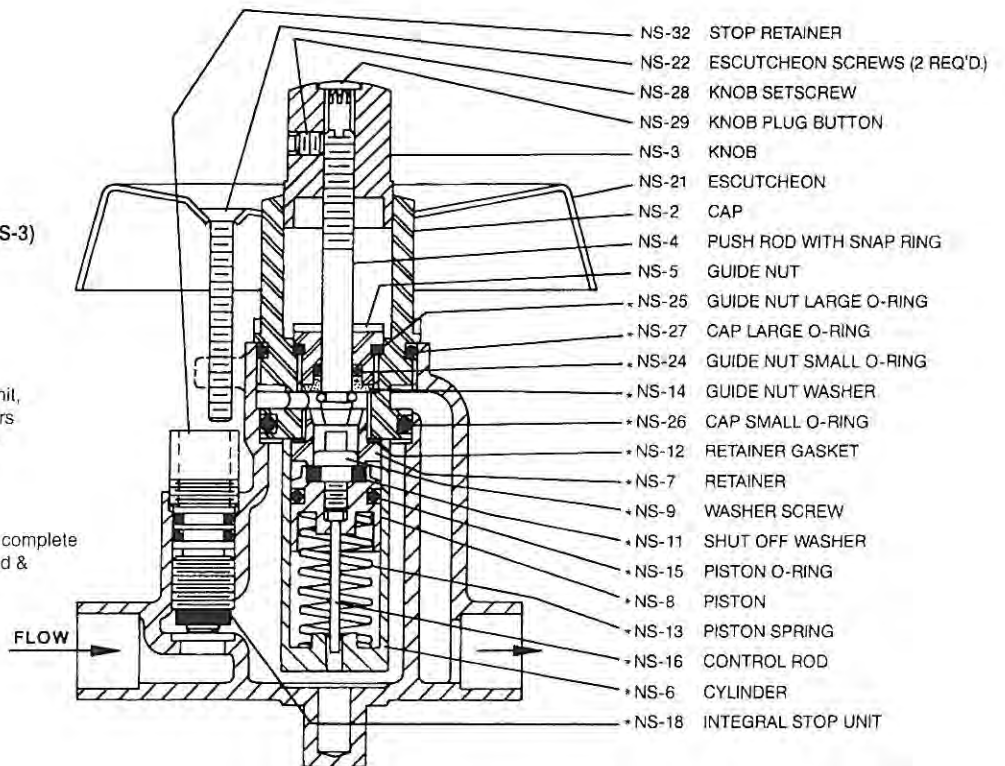
WASHER & GASKET REPAIR UNIT		
CAT. NO.	OEM NO.	PART NAME
C4149	PS-13R	REPAIR UNIT – includes Piston unit, Control rod sleeve, Sleeve retainer and all necessary washers and gaskets.
COMPLETE REPLACEMENT UNIT		
CAT. NO.	OEM NO.	PART NAME
C4148	PS-1	CATRIDGE UNIT – comprises the complete working unit of the valve-assembled & tested.

*Symmons*®

AUTOMATIC SHOWER LIMITING VALVE  
FROM 1983 TO DATE – MODEL 83.

NOTE: Identify valve by Model 83 stamped on KNOB (NS-3)

WASHER & GASKET REPAIR UNIT		
CAT. NO.	OEM NO.	PART NAME
C4146	NS-13R	REPAIR UNIT – includes Piston unit, Cylinder, and all necessary washers and gaskets as shown by asterisk.
COMPLETE REPLACEMENT UNIT		
CAT. NO.	OEM NO.	PART NAME
C4145	NS-1	CATRIDGE UNIT – comprises the complete working unit of the valve-assembled & tested.



## We Repair and Rent Tools!



## Tired of waiting 4-5 weeks for tool repair?

Standard Supply Company repairs most major brands of electric tools within a **7 day or less** lead time!\*

We will repair your Milwaukee,  
Black & Decker, Makita, Porter Cable, etc...

We can also repair some brands of  
electric drain cleaning machines.

***Ask any of our friendly order desk staff for a  
complete list of tools available for rent!***

Standard Supply is not authorized to do warranty work.  
\*Lead time is valid only if no special-order parts are needed.